

Dated Coins of Antiquity

**Shekels of Tyre - Supplemental Photographs
(Release 1)**

By Edward E. Cohen



Dated Coins of Antiquity

Shekels of Tyre - Supplemental Photographs (Release 1)

By Edward E. Cohen



Lancaster / London

© 2014 by Edward E. Cohen

All rights reserved. No part of this book may be reproduced by any means, printed, electronic, or other, without prior permission in writing from the copyright holder. However, brief quotations from this book are permitted for use in critical articles or book reviews.

Permission is granted for free use of the numbering system (that is, coin No.) in advertisements, price lists, auction catalogues and critical articles. This permission is granted when acknowledgment is made by stating the author and title. The preferred way to make reference to a coin in this supplement is DCA-Tyre, followed by the coin number, that is Dated Coins of Antiquity, Tyre.

Published by Classical Numismatic Group, Inc.

P.O. Box 479

Lancaster, PA 17608-0479

ISBN 978-0-9837652-9-5

Printed in the United States of America

Dated Coins of Antiquity (DCA), Supplemental Photographs of Tyre

Contents

1. INTRODUCTION	9
2. Tyre Shekels, DCA 919.....	19
2.1 Tyre Shekel, Year 1, 126/125 BC.....	19
2.2 Tyre Shekel, Year 2, 125/124 BC.....	20
2.3 Tyre Shekel, Year 3, 124/123 BC.....	20
2.4 Tyre Shekel, Year 4, 123/122 BC.....	21
2.5 Tyre Shekel, Year 5, 122/121 BC.....	21
2.6 Tyre Shekel, Year 6, 121/120 BC.....	22
2.7 Tyre Shekel, Year 7, 120/119 BC.....	23
2.8 Tyre Shekel, Year 8, 119/118 BC.....	23
2.9 Tyre, Shekel, Year 9, 118/117 BC.....	24
2.10 Tyre, Shekel, Year 10, 117/116 BC.....	25
2.11 Tyre, Shekel, Year 11, 116/115 BC.....	26
2.12 Tyre, Shekel, Year 12, 115/114 BC.....	27
2.13 Tyre, Shekel, Year 13, 114/113 BC.....	28
2.14 Tyre, Shekel, Year 14, 113/112 BC.....	29
2.15 Tyre, Shekel, Year 15, 112/111 BC.....	29
2.16 Tyre, Shekel, Year 16, 111/110 BC.....	30
2.17 Tyre, Shekel, Year 17, 110/109 BC.....	31
2.18 Tyre, Shekel, Year 18, 109/108 BC.....	32
2.19 Tyre, Shekel, Year 19, 108/107 BC.....	33
2.20 Tyre, Shekel, Year 20, 107/106 BC.....	35
2.21 Tyre, Shekel, Year 21, 106/105 BC.....	37
2.22 Tyre, Shekel, Year 22, 105/104 BC.....	38
2.23 Tyre, Shekel, Year 23, 104/103 BC.....	38
2.24 Tyre, Shekel, Year 24, 103/102 BC.....	39
2.25 Tyre, Shekel, Year 25, 102/101 BC.....	40
2.26 Tyre, Shekel, Year 26, 101/100 BC.....	41
2.27 Tyre, Shekel, Year 27, 100/99 BC.....	42
2.28 Tyre, Shekel, Year 28, 99/98 BC.....	45
2.29 Tyre, Shekel, Year 29, 98/97 BC.....	49
2.30 Tyre, Shekel, Year 30, 97/96 BC.....	51
2.31 Tyre, Shekel, Year 31, 96/95 BC.....	52
2.32 Tyre, Shekel, Year 32, 95/94 BC.....	53
2.33 Tyre, Shekel, Year 33, 94/93 BC.....	54
2.34 Tyre, Shekel, Year 34, 93/92 BC.....	55

2.35	Tyre, Shekel, Year 35, 92/91BC	56
2.36	Tyre, Shekel, Year 36, 91/90 BC	57
2.37	Tyre, Shekel, Year 37, 90/89 BC	58
2.38	Tyre, Shekel, Year 38, 89/88 BC	61
2.39	Tyre, Shekel, Year 39, 88/87 BC	63
2.40	Tyre, Shekel, Year 40, 87/86 BC	65
2.41	Tyre, Shekel, Year 41, 86/85 BC	67
2.42	Tyre, Shekel, Year 42, 85/84 BC	68
2.43	Tyre, Shekel, Year 43, 84/83 BC	70
2.44	Tyre, Shekel, Year 45, 82/81 BC	71
2.45	Tyre, Shekel, Year 46, 81/80 BC	72
2.46	Tyre, Shekel, Year 47, 80/79 BC	73
2.47	Tyre, Shekel, Year 48, 79/78 BC	74
2.48	Tyre, Shekel, Year 49, 78/77 BC	76
2.49	Tyre, Shekel, Year 50, 77/76 BC	77
2.50	Tyre, Shekel, Year 51, 76/75 BC	79
2.51	Tyre, Shekel, Year 52, 75/74 BC	80
2.52	Tyre, Shekel, Year 53, 74/73 BC	81
2.53	Tyre, Shekel, Year 54, 73/72 BC	82
2.54	Tyre, Shekel, Year 55, 72/71 BC	84
2.55	Tyre, Shekel, Year 57, 70/69 BC	85
2.56	Tyre, Shekel, Year 58, 69/68 BC	86
2.57	Tyre, Shekel, Year 59, 68/67 BC	86
2.58	Tyre, Shekel, Year 60, 67/66 BC	87
2.59	Tyre, Shekel, Year 61, 66/65 BC	88
2.60	Tyre, Shekel, Year 62, 65/64 BC	89
2.61	Tyre, Shekel, Year 63, 64/63 BC	89
2.62	Tyre, Shekel, Year 64, 63/62 BC	90
2.63	Tyre, Shekel, Year 65, 62/61 BC	91
2.64	Tyre, Shekel, Year 66, 61/60 BC	92
2.65	Tyre, Shekel, Year 67, 60/59 BC	93
2.66	Tyre, Shekel, Year 68, 59/58 BC	94
2.67	Tyre, Shekel, Year 69, 58/57 BC	95
2.68	Tyre, Shekel, Year 70, 57/56 BC	95
2.69	Tyre, Shekel, Year 71, 56/55 BC	96
2.70	Tyre, Shekel, Year 72, 55/54 BC	97
2.71	Tyre, Shekel, Year 73, 54/53 BC	98
2.72	Tyre, Shekel, Year 74, 53/52 BC	98
2.73	Tyre, Shekel, Year 78, 49/48 BC	99
2.74	Tyre, Shekel, Year 79, 48/47 BC	101
2.75	Tyre, Shekel, Year 80, 47/46 BC	103
2.76	Tyre, Shekel, Year 81, 46/45 BC	105
2.77	Tyre, Shekel, Year 82, 45/44 BC	107
2.78	Tyre, Shekel, Year 83, 44/43 BC	108

2.79	Tyre, Shekel, Year 84, 43/42 BC.....	109
2.80	Tyre, Shekel, Year 85, 42/41 BC.....	110
2.81	Tyre, Shekel, Year 86, 41/40 BC.....	111
2.82	Tyre, Shekel, Year 87, 40/39 BC.....	113
2.83	Tyre, Shekel, Year 88, 39/38 BC.....	115
2.84	Tyre, Shekel, Year 89, 38/37 BC.....	118
2.85	Tyre, Shekel, Year 92, 35/34 BC.....	120
2.86	Tyre, Shekel, Year 93, 34/33 BC.....	121
2.87	Tyre, Shekel, Year 94, 33/32 BC.....	122
2.88	Tyre, Shekel, Year 95, 32/31 BC.....	123
2.89	Tyre, Shekel, Year 96, 31/30 BC.....	124
2.90	Tyre, Shekel, Year 97, 30/29 BC.....	127
2.91	Tyre, Shekel, Year 98, 29/28 BC.....	128
2.92	Tyre, Shekel, Year 99, 28/27 BC.....	129
2.93	Tyre, Shekel, Year 100, 27/26 BC.....	131
2.94	Tyre, Shekel, Year 101, 26/25 BC.....	133
2.95	Tyre, Shekel, Year 102, 25/24 BC.....	134
2.96	Tyre, Shekel, Year 103, 24/23 BC.....	135
2.97	Tyre, Shekel, Year 104, 23/22 BC.....	138
2.98	Tyre, Shekel, Year 105, 22/21 BC.....	139
2.99	Tyre, Shekel, Year 106, 21/20 BC.....	141
2.100	Tyre, Shekel, Year 107, 20/19 BC.....	142
2.101	Tyre, Shekel, Year 108, 19/18 BC.....	146
2.102	Tyre, Shekel, Year 109, 18/17 BC.....	147
2.103	Tyre, Shekel, Year 110, 17/16 BC.....	148
2.104	Tyre, Shekel, Year 111, 16/15 BC.....	149
3.	Tyre Shekels (KP Monogram), DCA 920	151
3.1	Tyre, Shekel, Year 111, 16/15 BC.....	151
3.2	Tyre, Shekel, Year 112, 15/14 BC.....	151
3.3	Tyre, Shekel, Year 113, 14/13 BC.....	152
3.4	Tyre, Shekel, Year 114, 13/12 BC.....	153
3.5	Tyre, Shekel, Year 115, 12/11 BC.....	156
3.6	Tyre, Shekel, Year 116, 11/10 BC.....	158
3.7	Tyre, Shekel, Year 117, 10/9 BC.....	160
3.8	Tyre, Shekel, Year 118, 9/8 BC.....	161
3.9	Tyre, Shekel, Year 120, 7/6 BC.....	163
3.10	Tyre, Shekel, Year 121, 6/5 BC.....	164
3.11	Tyre, Shekel, Year 122, 5/4 BC.....	164
3.12	Tyre, Shekel, Year 123, 4/3 BC.....	165
3.13	Tyre, Shekel, Year 124, 3/2 BC.....	165
3.14	Tyre, Shekel, Year 125, 2/1 BC.....	166
3.15	Tyre, Shekel, Year 126, 1 BC / 1 AD.....	167
3.16	Tyre, Shekel, Year 127, 1/2 AD	169
3.17	Tyre, Shekel, Year 128, 2/3 AD	170

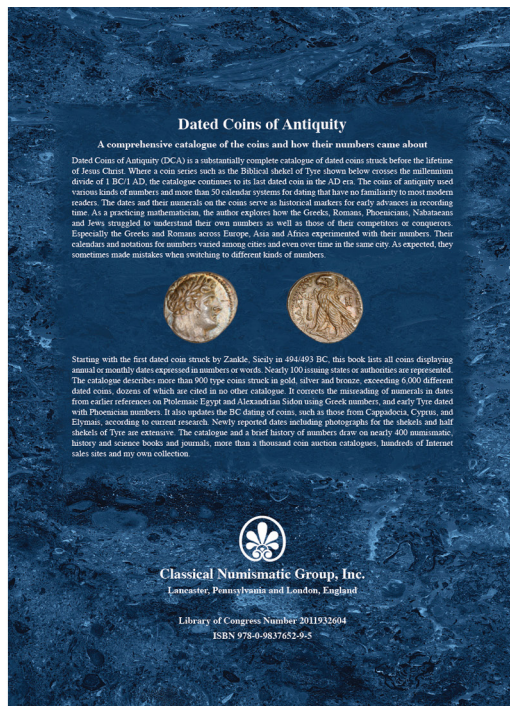
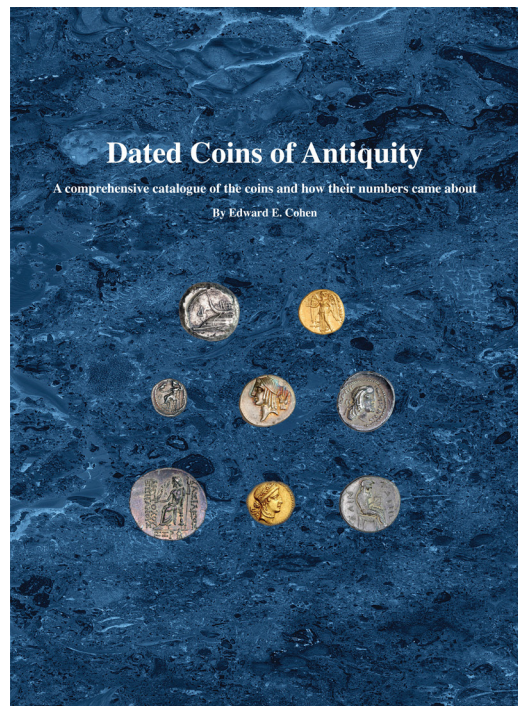
3.18	Tyre, Shekel, Year 129, 3/4 AD.....	172
3.19	Tyre, Shekel, Year 130, 4/5 AD.....	173
3.20	Tyre, Shekel, Year 131, 5/6 AD.....	175
3.21	Tyre, Shekel, Year 132, 6/7 AD.....	176
3.22	Tyre, Shekel, Year 133, 7/8 AD.....	177
3.23	Tyre, Shekel, Year 134, 8/9 AD.....	177
3.24	Tyre, Shekel, Year 135, 9/10 AD.....	178
3.25	Tyre, Shekel, Year 136, 10/11 AD.....	179
3.26	Tyre, Shekel, Year 137, 11/12 AD.....	179
3.27	Tyre, Shekel, Year 138, 12/13 AD.....	180
3.28	Tyre, Shekel, Year 139, 13/14 AD.....	180
3.29	Tyre, Shekel, Year 140, 14/15 AD.....	181
3.30	Tyre, Shekel, Year 141, 15/16 AD.....	183
3.31	Tyre, Shekel, Year 142, 16/17 AD.....	183
3.32	Tyre, Shekel, Year 143, 17/18 AD.....	184
3.33	Tyre, Shekel, Year 144, 18/19 AD.....	185
3.34	Tyre, Shekel, Year 145, 19/20 AD.....	187
3.35	Tyre, Shekel, Year 146, 20/21 AD.....	190
3.36	Tyre, Shekel, Year 147, 21/22 AD.....	192
3.37	Tyre, Shekel, Year 148, 22/23 AD.....	193
3.38	Tyre, Shekel, Year 149, 23/24 AD.....	194
3.39	Tyre, Shekel, Year 150, 24/25 AD.....	195
3.40	Tyre, Shekel, Year 151, 25/26 AD.....	196
3.41	Tyre, Shekel, Year 152, 26/27 AD.....	197
3.42	Tyre, Shekel, Year 153, 27/28 AD.....	198
3.43	Tyre, Shekel, Year 154, 28/29 AD.....	200
3.44	Tyre, Shekel, Year 155, 29/30 AD.....	200
3.45	Tyre, Shekel, Year 156, 30/31 AD.....	201
3.46	Tyre, Shekel, Year 157, 31/32 AD.....	203
3.47	Tyre, Shekel, Year 158, 32/33 AD.....	205
3.48	Tyre, Shekel, Year 159, 33/34 AD.....	206
3.49	Tyre, Shekel, Year 160, 34/35 AD.....	209
3.50	Tyre, Shekel, Year 161, 35/36 AD.....	211
3.51	Tyre, Shekel, Year 162, 36/37 AD.....	212
3.52	Tyre, Shekel, Year 163, 37/38 AD.....	214
3.53	Tyre, Shekel, Year 164, 38/39 AD.....	215
3.54	Tyre, Shekel, Year 165, 39/40 AD.....	215
3.55	Tyre, Shekel, Year 166, 40/41 AD.....	216
3.56	Tyre, Shekel, Year 167, 41/42 AD.....	216
3.57	Tyre, Shekel, Year 168, 42/43 AD.....	217
3.58	Tyre, Shekel, Year 169, 43/44 AD.....	217
3.59	Tyre, Shekel, Year 170, 44/45 AD.....	218
3.60	Tyre, Shekel, Year 171, 45/46 AD.....	219
3.61	Tyre, Shekel, Year 172, 46/47 AD.....	220

3.62	Tyre, Shekel, Year 173, 47/48 AD	222
3.63	Tyre, Shekel, Year 174, 48/49 AD	223
3.64	Tyre, Shekel, Year 175, 49/50 AD	224
3.65	Tyre, Shekel, Year 176, 50/51 AD	225
3.66	Tyre, Shekel, Year 177, 51/52 AD	227
3.67	Tyre, Shekel, Year 178, 52/53AD	229
3.68	Tyre, Shekel, Year 179, 53/54AD	230
3.69	Tyre, Shekel, Year 180, 54/55 AD	231
3.70	Tyre, Shekel, Year 181, 55/56 AD	231
3.71	Tyre, Shekel, Year 182, 56/57 AD	231
3.72	Tyre, Shekel, Year 183, 57/58 AD	232
3.73	Tyre, Shekel, Year 184, 58/59 AD	232
3.74	Tyre, Shekel, Year 185, 59/60 AD	233
3.75	Tyre, Shekel, Year 186, 60/61 AD	233
3.76	Tyre, Shekel, Year 187, 61/62 AD	234
3.77	Tyre, Shekel, Year 188, 62/63 AD	234
3.78	Tyre, Shekel, Year 189, 63/64 AD	234
3.79	Tyre, Shekel, Year 190, 64/65 AD	235
3.80	Tyre, Shekel, Year Not Readable	237
4.	Tyre Half Shekels, DCA 921	239
4.1	Tyre Half Shekel, Year 1, 126/125 BC	239
4.2	Tyre Half Shekel, Year 2, 125/124 BC	239
4.3	Tyre Half Shekel, Year 4, 123/122 BC	240
4.4	Tyre Half Shekel, Year 5, 122/121 BC	240
4.5	Tyre Half Shekel, Year 6, 121/120 BC	240
4.6	Tyre Half Shekel, Year 7, 120/119 BC	241
4.7	Tyre Half Shekel, Year 8, 119/118 BC	241
4.8	Tyre, Half Shekel, Year 9, 118/117 BC	241
4.9	Tyre, Half Shekel, Year 11, 116/115 BC	242
4.10	Tyre, Half Shekel, Year 13, 114/113 BC	242
4.11	Tyre, Half Shekel, Year 14, 113/112 BC	243
4.12	Tyre, Half Shekel, Year 16, 111/110 BC	243
4.13	Tyre, Half Shekel, Year 17, 110/109 BC	244
4.14	Tyre, Half Shekel, Year 20, 107/106 BC	245
4.15	Tyre, Half Shekel, Year 21, 106/105 BC	245
4.16	Tyre, Half Shekel, Year 22, 105/104 BC	246
4.17	Tyre, Half Shekel, Year 24, 103/102 BC	247
4.18	Tyre, Half Shekel, Year 32, 95/94 BC	248
4.19	Tyre, Half Shekel, Year 33, 94/93 BC	248
4.20	Tyre, Half Shekel, Year 35, 92/91BC	249
4.21	Tyre, Half Shekel, Year 36, 91/90 BC	249
4.22	Tyre, Half Shekel, Year 37, 90/89 BC	250
4.23	Tyre, Half Shekel, Year 38, 89/88 BC	251
4.24	Tyre, Half Shekel, Year 39, 88/87 BC	251

4.25	Tyre, Half Shekel, Year 40, 87/86 BC	253
4.26	Tyre, Half Shekel, Year 41, 86/85 BC	254
4.27	Tyre, Half Shekel, Year 43, 84/83 BC	255
4.28	Tyre, Half Shekel, Year 44, 83/82 BC	255
4.29	Tyre, Half Shekel, Year 45, 82/81 BC	256
4.30	Tyre, Half Shekel, Year 46 81/80 BC	256
4.31	Tyre, Half Shekel, Year 47, 80/79 BC	257
4.32	Tyre, Half Shekel, Year 48, 79/78 BC	258
4.33	Tyre, Half Shekel, Year 49, 78/77 BC	259
4.34	Tyre, Half Shekel, Year 50, 77/76 BC	259
4.35	Tyre, Half Shekel, Year 51, 76/75 BC	260
4.36	Tyre, Half Shekel, Year 53, 74/73 BC	261
4.37	Tyre, Half Shekel, Year 85, 42/41 BC	263
4.38	Tyre, Half Shekel, Year 87, 40/39 BC	263
4.39	Tyre, Half Shekel, Year 89, 38/37 BC	264
4.40	Tyre, Half Shekel, Year 95, 32/31 BC	264
4.41	Tyre, Half Shekel, Year 96, 31/30 BC	264
4.42	Tyre, Half Shekel, Year 98, 29/28 BC	265
4.43	Tyre, Half Shekel, Year 99, 28/27 BC	265
4.44	Tyre, Half Shekel, Year 100, 27/26 BC	266
4.45	Tyre, Half Shekel, Year 101, 26/25 BC	267
4.46	Tyre, Half Shekel, Year 102, 25/24 BC	267
4.47	Tyre, Half Shekel, Year 103, 24/23 BC	267
4.48	Tyre, Half Shekel, Year 106, 21/20 BC	267
4.49	Tyre, Half Shekel, Year 107, 20/19 BC	268
4.50	Tyre, Half Shekel, Year 108, 19/18 BC	268
4.51	Tyre, Half Shekel, Year 109, 18/17 BC	268
5.	Tyre Half Shekels (KP Monogram), DCA 922	269
5.1	Tyre, Half Shekel, Year 113, 14/13 BC	269
5.2	Tyre, Half Shekel, Year 114, 13/12 BC	269
5.3	Tyre, Half Shekel, Year 115, 12/11 BC	270
5.4	Tyre, Half Shekel, Year 117, 10/9 BC	270
5.5	Tyre, Half Shekel, Year 123, 4/3 BC	271
5.6	Tyre, Half Shekel, Year 126, 1 BC / 1 AD	272
5.7	Tyre, Half Shekel, Year 131, 5/6 AD	272
5.8	Tyre, Half Shekel, Year 132, 6/7 AD	273
5.9	Tyre, Half Shekel, Year 133, 7/8 AD	273
5.10	Tyre, Half Shekel, Year 134, 8/9 AD	273
5.11	Tyre, Half Shekel, Year 137, 11/12 AD	274
5.12	Tyre, Half Shekel, Year 138, 12/13 AD	274
5.13	Tyre, Half Shekel, Year 140, 14/15 AD	275
5.14	Tyre, Half Shekel, Year 141, 15/16 AD	275
5.15	Tyre, Half Shekel, Year 142, 16/17 AD	276
5.16	Tyre, Half Shekel, Year 143, 17/18 AD	277

5.17	Tyre, Half Shekel, Year 144, 18/19 AD	278
5.18	Tyre, Half Shekel, Year 145, 19/20 AD	278
5.19	Tyre, Half Shekel, Year 146, 20/21 AD	279
5.20	Tyre, Half Shekel, Year 147, 21/22 AD	279
5.21	Tyre, Half Shekel, Year 148, 22/23 AD	279
5.22	Tyre, Half Shekel, Year 149, 23/24 AD	280
5.23	Tyre, Half Shekel, Year 150, 24/25 AD	280
5.24	Tyre, Half Shekel, Year 151, 24/25 AD	280
5.25	Tyre, Half Shekel, Year 154, 28/29 AD	281
5.26	Tyre, Half Shekel, Year 155, 29/30 AD	281
5.27	Tyre, Half Shekel, Year 159, 33/34 AD	282
5.28	Tyre, Half Shekel, Year 160, 34/35 AD	283
5.29	Tyre, Half Shekel, Year 161, 35/36 AD	283
5.30	Tyre, Half Shekel, Year 162, 36/37 AD	284
5.31	Tyre, Half Shekel, Year 163, 37/38 AD	285
5.32	Tyre, Half Shekel, Year 164, 38/39 AD	286
5.33	Tyre, Half Shekel, Year 165, 39/40 AD	287
5.34	Tyre, Half Shekel, Year 166, 40/41 AD	287
5.35	Tyre, Half Shekel, Year 167, 41/42 AD	288
5.36	Tyre, Half Shekel, Year 168, 42/43 AD	289
5.37	Tyre, Half Shekel, Year 169, 43/44 AD	290
5.38	Tyre, Half Shekel, Year 170, 44/45 AD	291
5.39	Tyre, Half Shekel, Year 171, 45/46 AD	292
5.40	Tyre, Half Shekel, Year 172, 46/47 AD	293
5.41	Tyre, Half Shekel, Year 173, 47/48 AD	294
5.42	Tyre, Half Shekel, Year 175, 49/50 AD	294
5.43	Tyre, Half Shekel, Year 176, 50/51 AD	294
5.44	Tyre, Half Shekel, Year 178, 52/53AD	295
5.45	Tyre, Half Shekel, Year 181, 55/56 AD	295
5.46	Tyre, Half Shekel, Year 182, 56/57 AD	296
5.47	Tyre, Half Shekel, Year 183, 57/58 AD	296
5.48	Tyre, Half Shekel, Year 184, 58/59 AD	297
5.49	Tyre, Half Shekel, Year 190, 64/65 AD	297
5.50	Tyre, Half Shekel, Year 191, 65/66 AD	298
5.51	Tyre, Half Shekel, Year Not Readable	299
6.	Tyre Quarter Shekels, DCA 923.....	301
6.1	Tyre Quarter Shekel, Year 2, 125/124 BC.....	301
6.2	Tyre Quarter Shekel, Year 5, 122/121 BC.....	301
6.3	Tyre Quarter Shekel, Year 6, 121/120 BC.....	301
6.4	Tyre Quarter Shekel, Year 9, 118/117 BC.....	302
6.5	Tyre Quarter Shekel, Year 16, 111/110 BC.....	302
7.	Tyre Eighth Shekels, DCA 924	303
7.1	Tyre Eighth Shekel, Year 9, 118/117 BC	303

7.2 Tyre Eighth Shekel, Year 10, 117/116 BC	303
8. Tyre Eighth Shekels, DCA 925	305
8.1 Tyre Eighth Shekel, Year 9, 118/117 BC	305
9. APPENDIX - References.....	307
10. APPENDIX - Auction Companies, Coin Dealers and Academic Organizations	309



Cohen, Edward E. **Dated Coins of Antiquity. A comprehensive catalogue of the coins and how their numbers came about.** 2011. Hardbound. 656 pp., including appendices, drawings, maps, charts, and other illustrations; over 981 cataloged coins illustrated and more than 6,000 individually dated coins listed (GR, RR). (GR346) \$165

Dated Coins of Antiquity (DCA) is a substantially complete catalog of dated coins struck before the lifetime of Jesus Christ. Where a coin series such as the Biblical shekel of Tyre shown below crosses the millennium divide of 1 BC/AD 1, the catalog continues to its last dated coin in the AD era. The coins of antiquity used various kinds of numbers and more than 50 calendar systems for dating that have no familiarity to most modern readers. The dates and their numerals on the coins serve as historical markers for early advances in recording time. The book explores how the Greeks, Romans, Phoenicians, Nabataeans and Jews struggled to understand their own numbers as well as those of their competitors or conquerors. Especially the Greeks and Romans across Europe, Asia and Africa experimented with their numbers. Their calendars and notations for numbers varied among cities and even over time in the same city. As expected, they sometimes made mistakes when switching to different kinds of numbers.

Starting with the first dated coin struck by Zankle, Sicily in 494/493 BC, this book lists all coins displaying annual or monthly dates expressed in numbers or words. Nearly 100 issuing states or authorities are represented. The catalog describes more than 900 type coins struck in gold, silver and bronze, exceeding 6,000 different dated coins, dozens of which are cited in no other catalog. It corrects the misreading of numerals in dates from earlier references on Ptolemaic Egypt and Alexandrian Sidon using Greek numbers, and early Tyre dated with Phoenician numbers. It also updates the BC dating of coins, such as those from Cappadocia, Cyprus, and Elymais, according to current research. Newly reported dates including photographs for the shekels and half shekels of Tyre are extensive. The catalog and a brief history of numbers draw on nearly 400 numismatic, history and science books and journals, more than a thousand coin auction catalogs, hundreds of Internet sales sites and the author's collection.

1. INTRODUCTION

Dated Coins of Antiquity (DCA) is a substantially complete catalog of more than 6,000 dated coins struck before the lifetime of Jesus Christ. Where a coin series such as the Biblical shekel of Tyre crosses the millennium divide of 1 BC/AD 1, the catalog continued its listing to the last dated coin. A portion of the DCA section on Tyre (pages 501 to 515) contained a listing by date, including rarity and sources, for the silver shekels, half shekels, quarter shekels and eighth shekels bearing the local god Melkart.

These coins were struck nearly continuously for 191 years, from 126 BC to 65/66 AD. In addition to the date written with Greek letters, most of these coins also carried a monogram (usually also in Greek letters) and a Phoenician letter - Aleph or Bet. DCA was the first publication to list all known dates. This supplement provides photographic support to DCA. In several instances, this supplement confirms additional dates.

This first photographic supplement to DCA is by no means complete. It encompasses 589 different varieties of these coins, defined by their varying dates, monograms, Phoenician letters and four denominations in silver. These include photographs for **365** shekels, **104** half shekels, **3** quarter shekels and **2** eighth shekels. The remaining listings are citations from published collections and hoards, covered at the end of this introduction.

Before proceeding with several findings, a brief description will explain how to identify the dates, monograms and Phoenician letters on these coins. Referring to Figure 1-1, the year is expressed in Greek numerals using the local calendar of Tyre, where year 1 occurred in 126/125 BC. A monogram written in joined Greek letters that often repeated on these coins for several years appeared to the right of the eagle. Either of the first two letters of the Phoenician alphabet, either Aleph (𐤀) or Bet (𐤁), can also be seen between the legs of the eagle for the duration of the series through year 191 (65/66 AD).¹

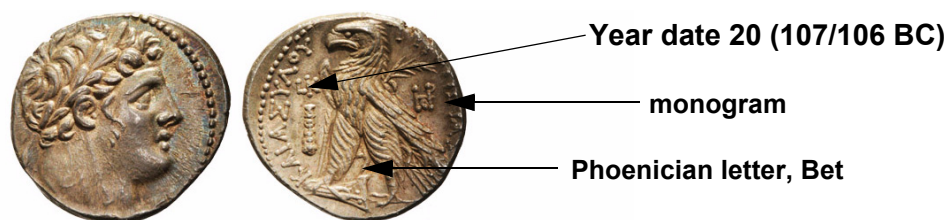


Figure 1-1. Shekel of Tyre - Placement of the date, monogram and Phoenician letter from year 1 (126/125 BC) to year 111 (16/15 BC)

The dating system required 27 symbols. Since the Greek alphabet had only 24 letters, the Greeks borrowed three additional letters from the Phoenician alphabet and treated them as numerals.² These three numerals appear among the others in Table 1-1. They are digamma (Ϟ) for 6, koppa (Ϟ) for 90 and San (Ϟ) for 900.

1. There is one significant error that I need to correct from DCA. Dr. Brooks Levy had shared with me her personal notes on the shekels and half shekels of Tyre. In DCA, I misquoted her reference for a half shekel of year 191 as a shekel of this year. Although there is no confirmed sighting for a year 191 shekel, a half shekel of this year is in my collection, shown in photo No. 579.
2. An appendix of DCA explained how the Tyre mint staff probably switched to a different alphabetic sequence of Greek letters (and therefore different numeric values) after use of these letters and symbols began.

INTRODUCTION

The form for two these symbols took various forms on the coins of Tyre - for 6, [and ζ , and for 90, Ϡ and ϡ . The highest letter-value appearing on the Tyre shekels and its minors was 100, P.

The order of representing the digits in the date started right to left until year 72 (55/54 BC), when the Greek numerals started also to appear intermittently from left to right, for example, OB and BO respectively for year 72. Beginning in year 86 (41/40 BC), the date was always written from left to right. DCA pointed out that the order of the Greek letters forming the date often followed cultural preferences at the mints and provided maps showing the preferences. With few exceptions, the Egyptian hieroglyphic L preceded the date when it consisted only of a single letter, such as years 1 to 9, 20, 30, etcetera. This device was likely meant to distinguish the letter as a numeral.

Table 1-1. Greek letters used in the Greek Additive numbers

Units	A	B	Γ	Δ	E	[, ζ	Z	H	θ
	1	2	3	4	5	6	7	8	9
Tens	I	K	Λ	M	N	Ξ	O	Π	Ϡ, ϡ
	10	20	30	40	50	60	70	80	90
Hundreds	P	Σ	T	Υ	Θ	X	Ψ	Ω	Ϟ
	100	200	300	400	500	600	700	800	900

Starting in year 111 (16/15 BC), an additional symbol KP usually appeared above the monogram, sometimes below it. As shown in Figure 1-2, KP is now in addition to the date, monogram and Phoenician letter.

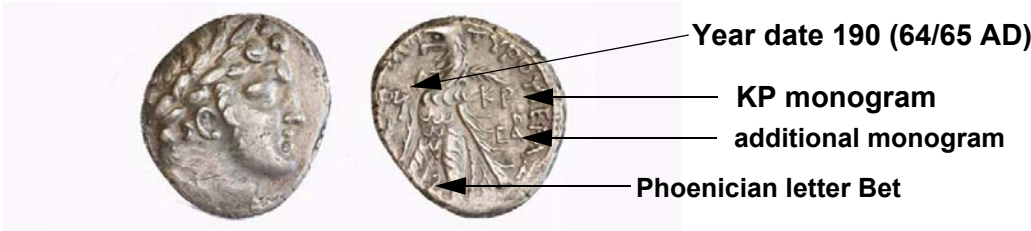


Figure 1-2. Shekel of Tyre - Consistent KP monogram with an additional varying monogram, starting year 111, 16/15 BC, and ending in year 190 (64/65 AD) for the shekel. The half shekel continued one more year to year 191 (65/66 AD)

In an area of numismatics where there has been no complete record of the coins, numerous articles have attempted to list the dates of issue, determine the minting location(s), and explain the meaning of the monograms and Phoenician letters. While DCA touched on these topics, expressed opinions, and presented an indication of rarity for each date, this supplement merely presents the evidence, the coins themselves. This introduction to the supplement summarizes basic data about what can be confirmed by an examination of the coins.

RPC made the conjecture that nearly all the dates for shekels will eventually be confirmed.^{[2][3]} (Numbers in square brackets refer to the references listed in Section 9.) This prophesy appears likely for the shekels while not so for the lesser denominations. Table 1-2 summarizes my count of confirmed dates for each denomination. Including the varieties of different dates, monograms and Phoenician letters nearly doubles the count of shekels. Only slightly more than half the dates for the half shekels have been confirmed. In addition, the variety of half shekels is only a third of those as seen on the shekels. The smaller denominations have survived in only small numbers.

The Table of Contents lists the years where a date is confirmed. These sections contain either photographs of the coin variety or a published citation for the coin. A citation for a reference without a photograph should be considered a reluctant confirmation of the date or monogram because so many on closer examination are misread. The reader can judge for him/herself my readings of dates from the photographs. For example, the British Museum Catalog (BMC) usually contained only date listings and hand-drawn monograms; among them, BMC reported an unillustrated shekel dated year 191, but Dr. Brooks Levy reported on personal examination that this coin was actually year 155.^[10] Among the **182** confirmed dates for shekels in this supplement, there are **167** dates with photographs, plus an additional two shekels confirmed by photographs among the citations. Cited references account for the remaining **13** shekels but showed no photographs. The publications of shekels in the Isfiya hoard retained by the Kadman Numismatic Pavilion have a significant display of photographs, which are cited with their monograms but not photographically reproduced in this supplement.^{[12][13]} In addition, there are at least five known shekels with overdates, year 37 over 35 (No. 89), year 84 over 83 (No. 190), year 153 over 151 (No. 360), year 174 over 173 (No. 418) and year 176 over 175 (No. 423).

In brief, these are the nine year dates that are not yet confirmed for the shekels: years 44, 56, 75, 76, 77, 90, 91, 119 and 191.

At least two shekels are known with a star counter stamp on the bust of Melkart. The star appears on shekels for year 94 (No. 217) and year 100 (No. 234). They have different monograms and no Phoenician letter between the legs of the eagle. There is no evidence that explains the meaning of this star.

Far fewer dates for the half shekel are confirmed - only **101** out of a possible 191 years. Indeed, since no half shekels are reported for the thirtyone-year period, year 54 through year 84, this interval might represent a complete cessation for this denomination.

Table 1-2. Confirmed dates, monograms and Phoenician Letters on the four denominations of Tyre silver coins

	Shekels	Half Shekels	Quarter Shekels	Eighth Shekels
Confirmed dates	182 out of 191 years	99 out of 191 years	5 years	1 year
Confirmed combinations of date, monogram and Phoenician letter	446 combinations	126 combinations	5 combinations	2 combinations

Taking a different view of the Tyrian silver coins, photographs in this supplement or referenced citations indicate a shekel or half shekel was struck in 184 different years. It is curious that in just one year, 191, only half shekels were struck (unless a shekel of that date is ever confirmed).

There are at least 50 distinct monograms plus additional minor varieties among the four denominations, and all are represented on coins in this supplement. A lone monogram appeared on the reverse of every denomination starting with year 1 until year 111. Generally the mint applied more than one monogram on the shekels or half shekels in any year. From years 1 to 4, the position of a monogram on the reverse varied but generally stabilized to the right of the eagle after these years.

The demarcation for the start of the ubiquitous **KP** monogram occurred over four years starting with year 108 (19/18 BC), completing the transition in year 111. Many of the various monograms starting with year 1 reappeared for several years until disappearing to be replaced by others until year 111, the last year when the shekels showed only one monogram. Year 108 (No. 263), year 109 (No. 264) and year 110 (No. 268) showed a single monogram appearing to be the Greek letters **KAP**. On additional shekels of year 108, year 109 and year 110 (respectively Nos. 263, 264 and 266), other monograms including a crude monogram looking like a corruption of **KAP** appeared. For the first time, a shekel of year 111 in 16/15 BC displayed the **KP** monogram with another unclear monogram below it (No. 270).³ Several shekels of year 112 were published from the Qumran hoard but their monograms were not reported. From year 113 until their cessation, a fixed monogram **KP** generally accompanied a second one that varied from year to year. There does not appear to be a significant continuation of prior monograms accompanying the start of **KP**. For example, the new monogram (**IZI**) appeared with **KP** for the first time and continued in year 113 and year 114 (No. 272 and 274). In year 115, the monogram **BN** reappeared, last seen in 12 different years from years 80 through 97. On the other hand, variations of monogram (**WP**) started in year 11 and ceased in year 108 with one exception - a half shekel of year 142 (No. 534). Although far fewer half shekels for the transition have been reported, the pattern of the monograms for the shekels was repeated on the half shekels. However, no half shekels are reported for years 110, 111 and 112, the period when the **KP** monogram made its entrance on the shekels.

Between the legs of the eagle, there usually appeared either one of the first two letters, Aleph or Bet, of the Phoenician alphabet. These letters first appeared in years 3 and 4 on the shekel and half shekel respectively. After these years, either or both Aleph or Bet appeared in the same year and even occasionally with the same monogram. Among the photographs, a pairing of shekels or half shekels identical except for the Phoenician letters are called out. While the appearance of Bet outnumbered the Aleph on shekels by about three to one, the frequency of these two letters was nearly the same on the half shekel. Table 1-3 shows the distribution of Aleph and Bet on the different denominations. These counts included the appearance of Aleph or Bet for every date and monogram combination. Where the Phoenician letter was not clear, the coin was not counted in this survey; twenty percent of the shekels and half shekels lacked a readable Phoenician letter.

3. In 1982 Ya'akov Meshorer reported the transition of the KAP to KP monograms. This supplement to DCA provides photographic support to his observations.^[14] David Hendin cataloged the start of the KP monogram series at year 108^[6] while Cohen in DCA gave year 109. As noted above, the KP monogram first appeared in year 111, preceded by three years of the KAP (and other) monograms.

Table 1-3. Incidence of the Phoenician Letter Aleph or Bet on the four denominations of Tyre silver coins. A coin with different date, monogram, and Phoenician letter is counted once. Coins where the Phoenician letter does not appear or is illegible are not counted in the tally.

	Shekels	Half Shekels	Quarter Shekels	Eighth Shekels
Phoenician letter Aleph	127	40	0	0
Phoenician letter Bet	229	53	3	2

Hoards of shekels and half shekels have been discovered near Israeli cities. In all, over 5,000 shekels and half shekels have been recovered, nearly 90 percent from the Isfiya hoard buried near Haifa.^{[12][13]} Table 1-4 shows additional hoards where the dates but not necessarily the monograms have been published.^[5] Other published hoards containing shekels and half shekels usually reported only quantities of coins in the hoards. Where a photo is lacking in this supplement, reference is made to a hoard coin or publication. The full citation for the hoards can be found in the Bibliography under the listed author.

Table 1-4. Hoards containing shekels or half shekels where the dates and sometimes monograms were published

Hoard Site	Location	Contents	Earliest date (Tyre Era)	Latest date (Tyre Era)	Hoard Discovery Year	Author Citation (see Bibliography)
Bir-Zeit	north of Ramallah, West Bank	54 shekels	137	not reported	1940	Sukenik ^[18]
Gamla	Golan Heights	20 shekels	not reported	118	1987	Syon ^[19]
Isfiya	near Haifa	3400+ shekels, 1000 half shekels	87	179	1960	Meir ^{[12][13]}
Ophel	north of Jerusalem	?	87	145	before 1936	(1) Hill ^[8] (2) Ariel ^[1]
Qumran	West Bank, Red Sea	406 shekels and 1/2 shekels	not reported	118	1955	Sharabani ^[17]
Ramat Rabel	Jerusalem	15 shekels	89	116	2008	Farhi, etc. ^[5]

INTRODUCTION

The catalog numbers listed in the chapter headings (such as DCA 919) refer to the coin number in the Tyre section of *Dated Coins of Antiquity* (DCA), which presents the rarity rating of each date and citations. In my experience, the number of monograms for a specific date does not necessarily correlate with the rarity of that date. The numbers preceding each coin listing in this photographic supplement (for example, DCA-Tyre 1) are for the reader's convenience and could change in future releases of this supplement.

My date and rarity listing in DCA for the shekels and half shekels of Tyre seemed to bring the most interest from the dealer and collector community while I gathered material for this book. The staff at Classical Numismatic Group (CNG) shared their information and advice on digital photography during many long discussions. Travis Markel from CNG was generous in filling out many of my missing photographs and improving layouts of graphic design. Ken McDevitt, Numismatist at CNG, provided numerous stylistic changes and alerted me to additional coins for this supplement. Dr. Brooks Levy shared her personal listings of dated shekels and half shekels of Tyre. She also permitted me to view the coins in the trays of the Princeton University's Firestone Library where she was the curator. For this photographic supplement, Frank Kovacs generously shared photographs of his complete date set of shekels spanning the lifetime of Christ, about years 122 to 159 (5/4 BC to 33/34 AD). Jonathan Kern and Ed Waddell followed the development of DCA and offered new listings and photographs of previously unlisted dates.

Many of my other colleagues in numismatics helped me in their generous sharing of photographs and new date listings. Many dealers, auctioneers, academic organizations and collectors provided permission to use their coin photographs. They are listed in Section 10 of this supplement and in *Dated Coins of Antiquity* whenever a new date listing came from one of their sale catalogues or web listings. I have letters of permission from the listed companies and apologize if I have overlooked the acquisition of a permission.

The author welcomes receiving citations or Internet addresses for photographs with unlisted dates or monograms where there are no copyright violations. Please send to **edw_cohen@yahoo.com**

Edward E. Cohen

May 2014

Dated Coins of Antiquity can be purchased at the following websites or that of other coin dealers distributing this book.

United States

Classical Numismatic Group

<http://www.cngcoins.com/Coin.aspx?CoinID=190860>

Charles Davis

<http://www.abebooks.com/Cohen-Dated-Coins-Antiquity-comprehensive-catalogue/9932345408/bd>

Ancient Numismatic Enterprise (ANE)

http://www.vcoins.com/en/stores/ancient_numismatic_enterprise/9/product/dated_coins_of_antiquity_a_comprehensive_catalogue_of_the_coins_and_how_their_numbers_came_about_by_edward_e_cohen/44578/Default.aspx

Forum Ancient Coins

<http://www.forumancientcoins.com/catalog/roman-and-greek-coins.asp?vpar=516&zpg=73805>

France**CGB Numismatique**

<http://www.cgb.fr/dated-coins-of-antiquity-a-comprehensive-catalogue-of-the-coins-and-how-their-numbers-came-about-cohen-edward-e-,Ld073,a.html>

Philippe Saive

<http://www.ma-shops.com/saive/item.php5?id=12962&lang=en>

Germany**Paul-Francis Jacquier**

<http://www.ma-shops.com/jacquier/item.php5?id=1144&lang=en>

Klassische Muenzen (Dr. Michael Brandt)

<http://www.klassische-muenzen.de/>

United Kingdom**Spink Books**

<https://www.spinkbooks.com/product.php?xProd=313&xSec=2>

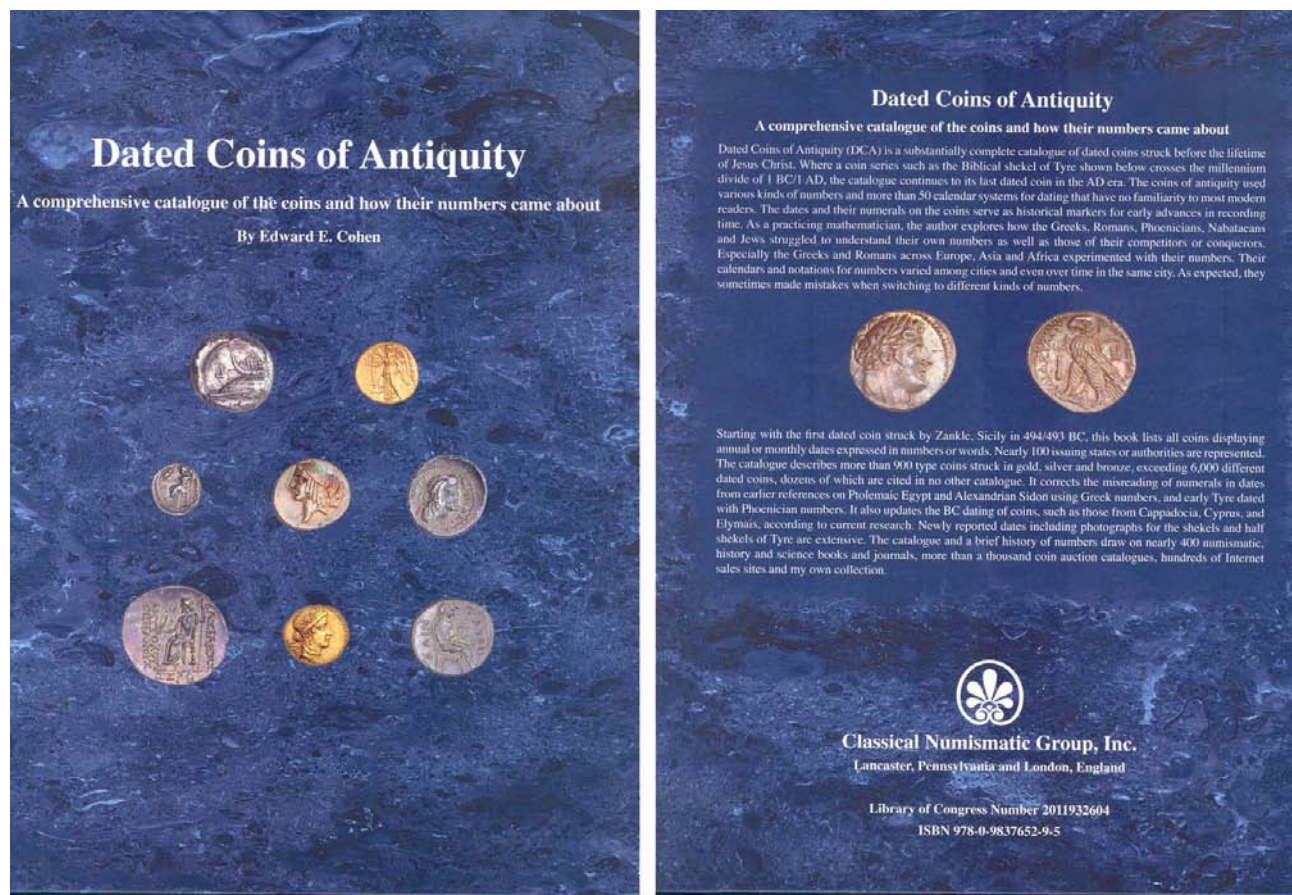


Figure 1-3. Front and back cover for *Dated Coins of Antiquity*, hardbound, 656 pages including appendices, drawings, maps, charts and other illustrations; 981 cataloged coin type types of dated coins illustrated and more than 6,000 individually dated coins listed

Tyre Shekels and Half Shekels, Greek Additive Dates



Coin No. 919 (year 20, K)

Coin No. 919 (Overdate, year 37 over 35, Z over E)

Tyre, 126 BC - 19 BC
Obverse: Head of Herakles (Melqart)
Reverse: Eagle standing left. Date to left.
 ΤΥΡΟΥ ΙΕΡΑΣΚΑΙ ΑΣΥΛΟΥ
 Silver One Shekel, 30 mm, 14 gm, Common

BC Year	Greek Add. Date ←	Greek Add. Date →	Era of Tyre	Date Rarity	Coin No. 919
126/125	A		1	C	BMC 26.233.44 ^[89]
125/124	B		2	C	BMC 26.233.45
124/123	Γ		3	C	BMC 26.234.47
123/122	Δ		4	C	BMC 26.234.51
122/121	E		5	R2	BMC 26.234.55
121/120	ς		6	C	BMC 26.235.58
120/119	Z		7	C	BMC 26.235.60
119/118	H		8	R3	BMC 26.235.63 CNG.76 9-12-2009 809
118/117	θ		9	C	BMC 26.235.64
117/116	ι		10	C	BMC 26.235.66
116/115	Α		11	C	BMC 26.236.70
115/114	Β		12	R1	BMC 26.236.73 CNGE 9-29-10 120
114/113	Γ		13	C	BMC 26.236.75
113/112	Δ		14	C	BMC 26.237.79
112/111	Ε		15	R3	BMC 26.237.81
111/110	ς		16	R1	Rouvier 1990 ^[158] TRT.1 12-2-1997 575
110/109	Z		17	C	BMC 26.237.82
109/108	H		18	C	BMC 26.237.84
108/107	θ		19	C	BMC 26.237.86
107/106	LK		20	C	BMC 26.238.91
106/105	AK		21	R2	BMC 26.239.98 HGA 1-6-07 50096

Figure 1-4. Sample page of Tyre listing from *Dated Coins of Antiquity*

2. Tyre Shekels, DCA 919

2.1 Tyre Shekel, Year 1, 126/125 BC



No. 1) Shekel, Year 1, LA, no letter between legs,
14.07 g



No. 2) Shekel, Year 1, LA, no letter between legs,
14.20 g

2.2 Tyre Shekel, Year 2, 125/124 BC



No. 3) Shekel, Year 2, LB, letter Bet between legs (just to left of left leg), 14.18 g

Table 2-1. Other Shekels for Year 2 (LB)

	Mono-gram	Letter Between Legs of Eagle	Weight (grams)	Source
No. 4)	M	Bet	13.78	BMC

2.3 Tyre Shekel, Year 3, 124/123 BC



No. 5) Shekel, Year 3, LΓ, monogram and letter Bet between legs, 14.09 g

Table 2-2. Other Shekels for Year 3 (LΓ)

	Mono-gram	Letter Between Legs of Eagle	Weight (grams)	Source
No. 6)	ZB	Bet	14.22	BMC

2.4 Tyre Shekel, Year 4, 123/122 BC



No. 7) Shekel, Year 4, LΔ, monogram and letter
Bet between legs, 14.11 g

Table 2-3. Other Shekels for Year 4 (LΔ)

	Mono-gram	Letter Between Legs of Eagle	Weight (grams)	Source
No. 8)	M	Aleph	14.22	BMC

2.5 Tyre Shekel, Year 5, 122/121 BC



No. 9) Shekel, Year 5, LE, monogram and letter
Bet between legs, 14.2 g

Table 2-4. Other Shekels for Year 5 (LE)

	Mono-gram	Letter Between Legs of Eagle	Weight (grams)	Source
No. 10)	M	Aleph	14.13	BMC

Tyre Shekel, Year 6, 121/120 BC

2.6 Tyre Shekel, Year 6, 121/120 BC



No. 11) Shekel, Year 6, L ζ , monogram and letter
Bet between legs, 13.50 g



No. 12) Shekel, Year 6, L ζ , monogram and letter
Bet between legs, unreported weight

2.7 Tyre Shekel, Year 7, 120/119 BC



No. 13) Shekel, Year 7, LZ, letter Aleph between legs, monogram to right, 14.16 g

2.8 Tyre Shekel, Year 8, 119/118 BC



No. 15) Shekel, Year 8, LH, letter Bet between legs, monogram to right, 13.56 g

Table 2-5. Other Shekels for Year 7 (LZ)

	Mono-gram	Letter Between Legs of Eagle	Weight (grams)	Source
No. 14)	M	Aleph	14.21	BMC

Tyre, Shekel, Year 9, 118/117 BC

2.9 Tyre, Shekel, Year 9, 118/117 BC



No. 16) Shekel, Year 9, LΘ, letter Bet between legs, 14.19 g



No. 17) Shekel, Year 9, LΘ, letter Bet between legs, 13.98 g



2.10 Tyre, Shekel, Year 10, 117/116 BC




No. 18) Shekel, Year 10, L|, letter Bet between legs, 14.11 g



No. 19) Shekel, Year 10, L|, letter Bet between legs, 14.24 g

Table 2-6. Other Shekels for Year 10 (L|)

	Mono-gram	Letter Between Legs of Eagle	Weight (grams)	Source
No. 20)		Aleph	13.58	BMC

Tyre, Shekel, Year 11, 116/115 BC

2.11 Tyre, Shekel, Year 11, 116/115 BC



No. 21) Shekel, Year 11, A|, letter Bet between legs, 13.81 g



No. 22) Shekel, Year 11, A|, letter Bet between legs, 14.02 g



No. 23) Shekel, Year 11, A|, letter Bet between legs, 14.11 g

2.12 Tyre, Shekel, Year 12, 115/114 BC



No. 24) Shekel, Year 12, B|, letter Bet between legs, 14.28 g

Tyre, Shekel, Year 13, 114/113 BC

2.13 Tyre, Shekel, Year 13, 114/113 BC



No. 25) Shekel, Year 13, Γ, letter Bet between legs, 13.77 g



No. 26) Shekel, Year 13, Γ, letter Bet between legs, 14.23 g

2.14 Tyre, Shekel, Year 14, 113/112 BC



No. 27) Shekel, Year 14, Δ|, letter Bet between legs, 14.30 g

2.15 Tyre, Shekel, Year 15, 112/111 BC



No. 28) Shekel, Year 15, E|, letter Bet between legs, 14.30 g

Table 2-7. Other Shekels for Year 15 (LE|)

	Mono-gram	Letter Between Legs of Eagle	Weight (grams)	Source
No. 29)		Bet	14.21	BMC

Tyre, Shekel, Year 16, 111/110 BC

2.16 Tyre, Shekel, Year 16, 111/110 BC



No. 30) Shekel, Year 16, ζ , letter Bet between legs, 14.35 g



No. 31) Shekel, Year 16, ζ , letter Bet between legs, 14.22 g

2.17 Tyre, Shekel, Year 17, 110/109 BC



No. 32) Shekel, Year 17, Z|, letter Aleph between legs, 13.34 g



No. 33) Shekel, Year 17, Z|, letter Bet between legs, 13.55 g

Tyre, Shekel, Year 18, 109/108 BC

2.18 Tyre, Shekel, Year 18, 109/108 BC



No. 34) Shekel, Year 18, H₁, letter Bet between legs, 14.29 g



No. 35) Shekel, Year 18, H₁, letter Bet between legs, 13.19 g

2.19 Tyre, Shekel, Year 19, 108/107 BC

The next two shekels of year 19 (Θ|) display the same monogram but different Phoenician letters, Aleph and Bet, between the legs of the eagle.



No. 36) Shekel, Year 19, Θ|, letter Aleph between legs, 14.08 g



No. 37) Shekel, Year 19, Θ|, letter Bet between legs, 14.25 g

Tyre, Shekel, Year 19, 108/107 BC

The next two shekels of year 19, Θ|, (one of them listed in BMC) have the same monogram, different Phoenician letters, Aleph and Bet.



No. 38) Shekel, Year 19, Θ|, letter Aleph between legs, 13.02g



No. 40) Shekel, Year 19, Θ|, letter Bet between legs, 14.30g

Table2-8. Other Shekels for Year 19 (Θ|)

	Mono-gram	Letter Between Legs of Eagle	Weight (grams)	Source
No. 39)	M	Bet	14.321	BMC

2.20 Tyre, Shekel, Year 20, 107/106 BC

The next shekel lacks a Phoenician letter. The following coin has the same date and monogram and shows the letter Bet.



No. 41) Shekel, Year 20, LK, no letter between legs, unreported weight



No. 42) Shekel, Year 20, LK, letter Bet between legs, 14.30 g



No. 43) Shekel, Year 20, LK, letter Bet between legs, 14.26 g



No. 44) Shekel, Year 20, LK, letter Bet between legs, 14.18 g

2.21 Tyre, Shekel, Year 21, 106/105 BC

The next two shekels of year 21, AK, have the same monogram, different Phoenician letters, Aleph and Bet.




No. 45) Shekel, Year 21, AK, letter Aleph between legs, 13.94 g



No. 46) Shekel, Year 21, AK, letter Bet between legs, 14.15g

Table 2-9. Other Shekels for Year 21 (AK)

	Mono-gram	Letter Between Legs of Eagle	Weight (grams)	Source
No. 47)		Bet	14.25	BMC

Tyre, Shekel, Year 22, 105/104 BC

2.22 Tyre, Shekel, Year 22, 105/104 BC



No. 48) Shekel, Year 22, BK, letter Bet between legs, 14.31 g

2.23 Tyre, Shekel, Year 23, 104/103 BC



No. 49) Shekel, Year 23, ΓΚ, letter Bet between legs, unreported weight

2.24 Tyre, Shekel, Year 24, 103/102 BC



No. 50) Shekel, Year 24, ΔK, letter Bet between legs, 14.37 g



No. 51) Shekel, Year 24, ΔK, letter Aleph between legs, 14.30 g

2.25 Tyre, Shekel, Year 25, 102/101 BC

Shekels No. 52 and No. 53 have the same date, year 25 (EK) but different Phoenician letters, Aleph and Bet.



No. 52) Shekel, Year 25, EK, letter Aleph between legs, 14.27 g



No. 53) Shekel, Year 25, EK, letter Bet between legs, 13.73 g

Table2-10. Other Shekels for Year 25 (EK)

	Mono-gram	Letter Between Legs of Eagle	Weight (grams)	Source
No. 54)		Bet	14.13	BMC

2.26 Tyre, Shekel, Year 26, 101/100 BC



No. 55) Shekel, Year 26, ζ K, letter Bet between legs, unreported weight



No. 56) Shekel, Year 26, ζ K, letter Bet between legs, 14.28 g

Tyre, Shekel, Year 27, 100/99 BC

2.27 Tyre, Shekel, Year 27, 100/99 BC

The next two shekels of year 27 (ZK) differ only in the letter, Aleph or Bet, between the legs of the eagle.



No. 57) Shekel, Year 27, ZK, letter Aleph between legs, unreported weight



No. 58) Shekel, Year 27, ZK, letter Bet between legs, 14.42 g

The next two shekels of year 27 (ZK) differ only in the letter, Aleph or Bet, between the legs of the eagle.



No. 59) Shekel, Year 27, ZK, Aleph between legs, 14.42 g



No. 60) Shekel, Year 27, ZK, Bet between legs, 14.20 g

Tyre, Shekel, Year 27, 100/99 BC



No. 61) Shekel, Year 27, ZK, Aleph between legs, 14.31 g

2.28 Tyre, Shekel, Year 28, 99/98 BC

The next two shekels of year 28 (HK) have slightly different monograms and the same letter Bet.



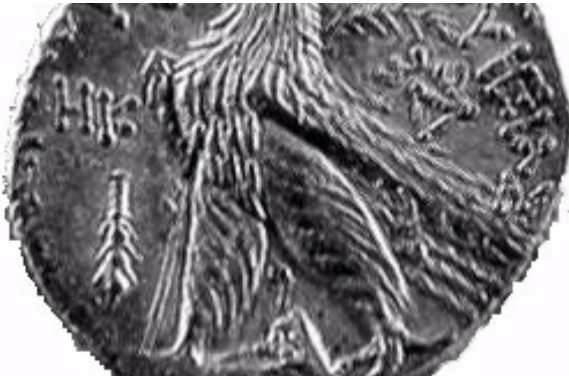
No. 62) Shekel, Year 28, HK, letter Bet between legs, 14.3 g



No. 63) Shekel, Year 28, HK, letter Bet between legs, 14.41 g

Tyre, Shekel, Year 28, 99/98 BC

This next shekel of year 28 has the same monogram and Phoenician letter Bet as No. 63 but the club to the left of the eagle has a different style.



No. 64) Shekel, Year 28, HK, letter Bet between legs, 14.42 g (Same monogram and letter as previous coin but different style club)



No. 65) Shekel, Year 28, HK, letter Bet between legs, 14.20 g

Next two shekels have same date and monogram but different Phoenician letters, Aleph and Bet, between the legs of eagle



No. 66) Shekel, Year 28, HK, letter Aleph between legs, 14.55g



No. 67) Shekel, Year 28, HK, letter Bet between legs, 14.37 g

Tyre, Shekel, Year 28, 99/98 BC

The next two shekels of year 28 (HK) have the same monogram but different Phoenician letters between the legs of the eagle.



No. 68) Shekel, Year 28, HK, letter Aleph between legs, 14.27 g



No. 69) Shekel, Year 28, HK, letter Bet between legs, 14.16 g

2.29 Tyre, Shekel, Year 29, 98/97 BC



No. 70) Shekel, Year 29, ΘΚ, letter Bet between legs, unreported weight



No. 71) Shekel, Year 29, ΘΚ, letter Bet between legs, 14.40 g



No. 72) Shekel, Year 29, ΘK, letter Bet between legs, 14.36 g



No. 73) Shekel, Year 29, ΘK, letter Aleph between legs, unreported weight

2.30 Tyre, Shekel, Year 30, 97/96 BC



No. 74) Shekel, Year 30, LΛ, letter Bet between legs, 14.02 g



No. 75) Shekel, Year 30, LΛ, letter Bet between legs, 14.30 g

Tyre, Shekel, Year 31, 96/95 BC

2.31 Tyre, Shekel, Year 31, 96/95 BC



No. 76) Shekel, Year 31, AΛ, letter Bet between legs, unreported weight



No. 77) Shekel, Year 31, AΛ, letter Bet between legs, 14.40 g



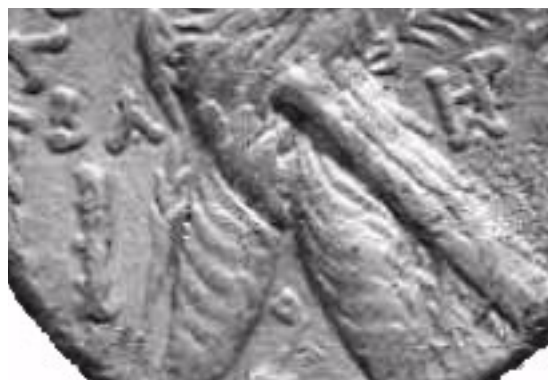
No. 78) Shekel, Year 31, AΛ, letter Aleph between legs, unreported weight

2.32 Tyre, Shekel, Year 32, 95/94 BC

Coin No. 79 and Coin No. 80 have the same date, year 32 (BΛ), and monogram but different Phoenician letters between the legs of the eagle.



No. 79) Shekel, Year 32, BΛ, letter Aleph between legs, unreported weight



No. 80) Shekel, Year 32, BΛ, letter Bet between legs, 14.04 g

2.33 Tyre, Shekel, Year 33, 94/93 BC

The next two shekels of year 33 differ only in the Phoenician letters, Aleph and Bet, between the legs of the eagle.



No. 81) Shekel, Year 33, ΓΛ, letter Aleph between legs, 14.28 g



No. 82) Shekel, Year 33, ΓΛ, letter Bet between legs, unreported weight

Table 2-11. Other Shekels for Year 33 (ΓΛ)

	Mono-gram	Letter Between Legs of Eagle	Weight (grams)	Source
No. 83)	Δ	(Unclear)	11.27	BMC

2.34 Tyre, Shekel, Year 34, 93/92 BC



No. 84) Shekel, Year 34, ΔΔ, letter Bet between legs, 14.44 g

Tyre, Shekel, Year 35, 92/91BC

2.35 Tyre, Shekel, Year 35, 92/91BC




No. 85) Shekel, Year 35, EA, letter Bet between legs, 14.33 g



No. 86) Shekel, Year 35, EA, letter Bet between legs, unreported weight

2.36 Tyre, Shekel, Year 36, 91/90 BC

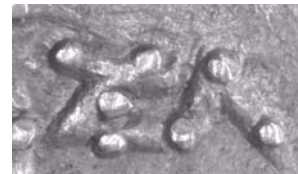
Table 2-12. Other Shekels for Year 36 (ϜΛ)

	Mono-gram	Letter Between Legs of Eagle	Weight (grams)	Source
No. 87)		Aleph	14.27	BMC

2.37 Tyre, Shekel, Year 37, 90/89 BC



No. 88) Shekel, Year 37, ZΛ, letter Aleph between legs, 14.22 g



No. 89 is the first of several shekels with an overdate, year 37 over 35 where the 7 (Z) appears engraved over the 5 (E).

No. 89) Shekel, Year 37, ZΛ, over 35, (Z over E), letter Aleph between legs, 14.37 g

The next two shekels of year 37, ZΛ, have the same monogram but different Phoenician letters, Aleph and Bet.



No. 90) Shekel, Year 37, ZΛ, letter Aleph between legs, 14.42 g



No. 91) Shekel, Year 37, ZΛ, letter Bet between legs, unreported weight

Tyre, Shekel, Year 37, 90/89 BC



No. 92) Shekel, Year 37, ZΛ, letter Bet between legs, unreported weight

2.38 Tyre, Shekel, Year 38, 89/88 BC

The next two shekels of year 38, HΛ, have the same monogram but different Phoenician letters, Aleph and Bet.



No. 93) Shekel, Year 38, HΛ, letter Aleph between legs, 14.33 g



No. 94) Shekel, Year 38, HΛ, letter Bet between legs, 14.38 g

Tyre, Shekel, Year 38, 89/88 BC



No. 95) Shekel, Year 38, $\text{H}\Lambda$, letter Aleph
between legs, 14.38 g

2.39 Tyre, Shekel, Year 39, 88/87 BC

The next two shekels of year 39 (ΘΛ) display the same monogram but different Phoenician letters, Aleph and Bet, between the legs of the eagle.



No. 96) Shekel, Year 39, ΘΛ, letter Aleph between legs, 14.41 g



No. 97) Shekel, Year 39, ΘΛ, letter Bet between legs, 14.21 g

Tyre, Shekel, Year 39, 88/87 BC

2.40 Tyre, Shekel, Year 40, 87/86 BC

The next two shekels of year 40 (LM) have the same monogram but different Phoenician letters.



No. 98) Shekel, Year 40, LM, letter Aleph between legs, 14.27 g



No. 99) Shekel, Year 40, LM, letter Bet between legs, 14.18 g



No. 100) Shekel, Year 40, LM, letter Aleph between legs, 14.32 g



No. 101) Shekel, Year 40, LM, letter Bet between legs, 14.16 g

Table2-13. Other Shekels for Year 40 (LM)

	Mono-gram	Letter Between Legs of Eagle	Weight (grams)	Source
No. 102)	א	Aleph	13.94	BMC

2.41 Tyre, Shekel, Year 41, 86/85 BC

These two shekels have the same date and monogram but different Phoenician letters, Aleph and Bet.



No. 103) Shekel, Year 41, AM, letter Aleph between legs, unreported weight



No. 104) Shekel, Year 41, AM, letter Bet between legs, 14.40 g

Tyre, Shekel, Year 42, 85/84 BC

2.42 Tyre, Shekel, Year 42, 85/84 BC



No. 105) Shekel, Year 42, BM, letter Aleph
between legs, 13.80 g



No. 106) Shekel, Year 42, BM, letter Aleph
between legs, 14.28 g

The authenticity of shekel No. 107, as well as the reading of its date, are not certain. Since there is no other coin with the monogram BM, these letters could represent the date, year 42. Likewise the symbol to the left of the eagle is unique on Tyre shekels.



No. 107) Shekel, possibly Year 42, BM, no letter between legs, 14.40 g

Tyre, Shekel, Year 43, 84/83 BC

2.43 Tyre, Shekel, Year 43, 84/83 BC



No. 108) Shekel, Year 43, ΓΜ, letter Bet between legs, 14.40 g



No. 109) Shekel, Year 43, ΓΜ, letter Aleph between legs, 14.33 g



No. 110) Shekel, Year 43, ΓΜ, letter Bet between legs, unreported weight

2.44 Tyre, Shekel, Year 45, 82/81 BC

The next two shekels of year 45 (EM) are similar in their date, monogram and Phoenician letter. However the date on No. 112 is retrograde.



**No. 111) Shekel, Year 45, EM, letter Aleph
between legs, 14.30 g**



**No. 112) Shekel, Year 45, EM, letter Aleph
between legs, 14.34 g (retrograde E in date)**

Tyre, Shekel, Year 46, 81/80 BC



No. 113) Shekel, Year 45, EM, letter Bet between legs, 14.10 g

2.45 Tyre, Shekel, Year 46, 81/80 BC



No. 114) Shekel, Year 46, SM, letter Bet between legs, 14.30 g

2.46 Tyre, Shekel, Year 47, 80/79 BC



No. 115) Shekel, Year 47, ZM, letter Bet between legs, 14.30 g

Tyre, Shekel, Year 48, 79/78 BC

2.47 Tyre, Shekel, Year 48, 79/78 BC



**No. 116) Shekel, Year 48, HM, letter Aleph
between legs, 14.38 g**

The monogram on Coin No. 117 appears to be the reverse of Coin No. 116.



**No. 117) Shekel, Year 48, HM, letter Aleph
between legs, 14.27 g**



No. 118) Shekel, Year 48, HM, letter Bet between legs, 14.30 g



No. 119) Shekel, Year 48, HM, letter Bet between legs, 14.10 g

Tyre, Shekel, Year 49, 78/77 BC

2.48 Tyre, Shekel, Year 49, 78/77 BC



No. 120) Shekel, Year 49, ΘΜ, letter Aleph between legs, 14.26 g



No. 121) Shekel, Year 49, ΘΜ, letter Bet between legs, 14.26 g

2.49 Tyre, Shekel, Year 50, 77/76 BC



No. 122) Shekel, Year 50, LN (retrograde L), letter Aleph between legs, 14.40 g



No. 123) Shekel, Year 50, LN (normal L), letter Bet between legs, 14.15 g



No. 124) Shekel, Year 50, LN, letter Bet between legs, 14.10 g



No. 125) Shekel, Year 50, LN, letter Bet between legs, 14.32 g

2.50 Tyre, Shekel, Year 51, 76/75 BC

The next two shekels of year 51 (AN) have the same monogram (Δ) but different Phoenician letters, Aleph and Bet, between the legs of the eagle.



No. 126) Shekel, Year 51, AN, letter Aleph between legs, 14.33 g



No. 127) Shekel, Year 51, AN, letter Bet between legs, 14.36 g

Tyre, Shekel, Year 52, 75/74 BC

This shekel has the same monogram and Phoenician letter as the previous one but the letter A in the date might be engraved over another letter.



No. 128) Shekel, Year 51, AN, letter Bet between legs, 13.82 g

2.51 Tyre, Shekel, Year 52, 75/74 BC



No. 129) Shekel, Year 52, BN, letter Bet between legs, 14.44 g

2.52 Tyre, Shekel, Year 53, 74/73 BC



No. 130) Shekel, Year 53, ΓN, letter Bet between legs, 14.15 g



No. 131) Shekel, Year 53, ΓN, letter Bet between legs, 14.20 g

Tyre, Shekel, Year 54, 73/72 BC

2.53 Tyre, Shekel, Year 54, 73/72 BC



No. 132) Shekel, Year 54, Δ N, letter Bet between legs, 14.00 g

The Phoenician letter Bet is retrograde on the next shekel.



No. 133) Shekel, Year 54, Δ N, retrograde letter Bet between legs, unreported weight



No. 134) Shekel, Year 54, Δ N, letter Bet between legs, 14.31 g

Tyre, Shekel, Year 55, 72/71 BC

2.54 Tyre, Shekel, Year 55, 72/71 BC



No. 135) Shekel, Year 55, EN, letter Bet between legs, 13.85 g



No. 136) Shekel, Year 55, EN, letter Bet between legs, 13.93 g

On the next shekel, the L symbol preceding the date EN is retrograde. Usually the L precedes dates using a single Greek letter, such as LN for year 50.

2.55 Tyre, Shekel, Year 57, 70/69 BC

The next two shekels of year 57 have the same monogram, Z. However the Phoenician letter is an Aleph on the first shekel, while the second has the letter Bet engraved over an Aleph.



No. 137) Shekel, Year 57, LZN, retrograde L follows date, letter Aleph between legs, 14.22 g



No. 138) Shekel, Year 57, ZN, Bet over Aleph between legs, 14.37 g

Tyre, Shekel, Year 58, 69/68 BC


2.56 Tyre, Shekel, Year 58, 69/68 BC



No. 139) Shekel, Year 58, HN, letter Bet between legs, 14.01 g

2.57 Tyre, Shekel, Year 59, 68/67 BC

Table 2-14. Other Shekels for Year 59 (ΘN)

	Mono-gram	Letter Between Legs of Eagle	Weight (grams)	Source
No. 140)		Bet	14.10	BMC

2.58 Tyre, Shekel, Year 60, 67/66 BC

Coin No. 141 and Coin No. 142 have the same date, year 60, $\text{L}\Xi$, monogram and letter beneath the eagle. In addition, the obverse of both appear to be overstruck on another coin.



No. 141) Shekel, Year 60, $\text{L}\Xi$, letter Bet between legs, 14.05 g



No. 142) Shekel, Year 60, $\text{L}\Xi$, letter Bet between legs, 14.35 g

Tyre, Shekel, Year 61, 66/65 BC

2.59 Tyre, Shekel, Year 61, 66/65 BC



No. 143) Shekel, Year 61, AΞ, letter Bet between legs, 14.23 g



No. 144) Shekel, Year 61, AΞ, letter Bet between legs, 14.02 g

2.60 Tyre, Shekel, Year 62, 65/64 BC

Table 2-15. Other Shekels for Year 62 (BΞ)

	Mono-gram	Letter Between Legs of Eagle	Weight (grams)	Source
No. 145)	Z	not clear	14.01	BMC

2.61 Tyre, Shekel, Year 63, 64/63 BC



No. 146) Shekel, Year 63, ΓΞ, letter Bet between legs, 13.73 g

Table 2-16. Other Shekels for Year 63 (ΓΞ)

	Mono-gram	Letter Between Legs of Eagle	Weight (grams)	Source
No. 147)	HP	Bet	14.41	BMC

2.62 Tyre, Shekel, Year 64, 63/62 BC



No. 148) Shekel, Year 64, ΔΞ, letter Bet between legs, 14.44 g



No. 149) Shekel, Year 64, ΔΞ, letter Bet between legs, 13.72 g

Table 2-17. Other Shekels for Year 64 (ΔΞ)

	Mono-gram	Letter Between Legs of Eagle	Weight (grams)	Source
No. 150)		Aleph	14.22	BMC
No. 151)		Aleph	14.50	BMC
No. 152)		Aleph	14.37	BMC

2.63 Tyre, Shekel, Year 65, 62/61 BC



No. 153) Shekel, Year 65, ΕΞ, letter Bet between legs, 14.14 g

Table2-18. Other Shekels for Year 63 (ΓΞ)

	Mono-gram	Letter Between Legs of Eagle	Weight (grams)	Source
No. 154)	Ζ	Bet	14.32	BMC
No. 155)	Δ	Bet	14.22	BMC

2.64 Tyre, Shekel, Year 66, 61/60 BC

The next two coins of year 66 (Ⲫⲉ) have the same monogram and letter Bet inscribed over a letter Aleph. However the second (No. 157) appears to be a crude copy of No. 156.



No. 156) Shekel, Year 66, Ⲫⲉ, letter Bet over Aleph between legs, 14.40 g



No. 157) Shekel, Year 66, Ⲫⲉ, letter Bet over Aleph between legs, 13.10 g



The next coin of year 66 ($\zeta\Xi$) is double struck. The date appears twice on the left.



No. 158) Shekel, Year 66, $\zeta\Xi$, letter Bet between legs, 14.24 g

2.65 Tyre, Shekel, Year 67, 60/59 BC



No. 159) Shekel, Year 67, $Z\Xi$, letter Aleph between legs, 13.84 g

2.66 Tyre, Shekel, Year 68, 59/58 BC

The next two shekels have the same date, monogram and letter between the eagle's legs but appear struck from different dies.



No. 160) Shekel, Year 68 HΞ, no letter between legs, 13.36 g



No. 161) Shekel, Year 68, HΞ, letter Bet between legs, 13.93 g

2.67 Tyre, Shekel, Year 69, 58/57 BC



No. 162) Shekel, Year 69 ΘΞ, unclear between legs, unreported weight

2.68 Tyre, Shekel, Year 70, 57/56 BC



No. 163) Shekel, Year 70, O, letter Bet between legs, 13.97 g

2.69 Tyre, Shekel, Year 71, 56/55 BC



No. 164) Shekel, Year 71 AO, letter Bet between legs, unreported weight

Table 2-19. Other Shekels for Year 71 (AO)

	Mono-gram	Letter Between Legs of Eagle	Weight (grams)	Source
No. 165)	Z	Bet	14.38	BMC

2.70 Tyre, Shekel, Year 72, 55/54 BC

Besides year 57, which might have been a retrograde engraving error, the shekel of year 72 is the first where the date appears left to right. One variety still used the right to left order of the letters in the date.

Date written left to right, OB



No. 166) Shekel, Year 72, OB, letter Bet between legs, 14.40 g

Table 2-20. Other Shekels for Year 72 (OB)

	Mono-gram	Letter Between Legs of Eagle	Weight (grams)	Source
No. 167)	Z	Aleph	14.11	BMC

Date written right to left, BO

Table 2-21. Other Shekels for Year 72 (BO)

	Mono-gram	Letter Between Legs of Eagle	Weight (grams)	Source
No. 168)	Z	Bet	14.33	BMC

2.71 Tyre, Shekel, Year 73, 54/53 BC



No. 169) Shekel, Year 73, ΟΓ, letter Aleph between legs, 13.67 g

2.72 Tyre, Shekel, Year 74, 53/52 BC



No. 171) Shekel, Year 74, ΟΔ, letter Aleph between legs, 13.99 g

Table 2-22. Other Shekels for Year 73 (ΟΓ)

	Mono-gram	Letter Between Legs of Eagle	Weight (grams)	Source
No. 170)	Z	Aleph	14.12	BMC

2.73 Tyre, Shekel, Year 78, 49/48 BC



No. 172) Shekel, Year 78, OH Bet between legs,
unreported weight



No. 173) Shekel, Year 78, OH Bet between legs,
14.0 g

Tyre, Shekel, Year 78, 49/48 BC



**No. 174) Shekel, Year 78, OH Bet between legs,
14.04 g**

2.74 Tyre, Shekel, Year 79, 48/47 BC



No. 175) Shekel, Year 79, ⲐⲐ, Bet between legs,
14.21 g

Table 2-23. Other Shekels for Year 79 (ⲐⲐ)

	Mono-gram	Letter Between Legs of Eagle	Weight (grams)	Source
No. 176)	ⲃ	Aleph	13.80	BMC

Tyre, Shekel, Year 79, 48/47 BC



2.75 Tyre, Shekel, Year 80, 47/46 BC



No. 177) Shekel, Year 80, Π, Bet between legs, 13.97 g



No. 178) Shekel, Year 80, Π, Aleph between legs, unreported weight

Tyre, Shekel, Year 80, 47/46 BC

The next two shekels of year 80 have same monogram but different Phoenician letters between legs of eagle.



No. 179) Shekel, Year 80, Π, Aleph between legs, unreported weight

Table 2-24. Other Shekels for Year 80 (Π)

	Mono-gram	Letter Between Legs of Eagle	Weight (grams)	Source
No. 180)	ⲁⲓ	Bet	13.75	BMC

2.76 Tyre, Shekel, Year 81, 46/45 BC

The next two shekels of year 81 (ΠΑ) have same monogram but different Phoenician letters between legs of eagle.



No. 181) Shekel, Year 81, ΠΑ, Aleph between legs, 13.96 g



No. 182) Shekel, Year 81, ΠΑ, Bet between legs, 14.07 g



No. 183) Shekel, Year 81, ΠΑ, Bet between legs, unreported weight

Table 2-25. Other Shekels for Year 81 (ΠΑ)

	Mono-gram	Letter Between Legs of Eagle	Weight (grams)	Source
No. 184)	Β	Bet	14.24	BMC

2.77 Tyre, Shekel, Year 82, 45/44 BC



No. 185) Shekel, Year 82, ΠΒ, Aleph between legs, 14.39 g



No. 186) Shekel, Year 82, ΠΒ, Bet between legs, 14.28 g

Tyre, Shekel, Year 83, 44/43 BC

2.78 Tyre, Shekel, Year 83, 44/43 BC



No. 187) Shekel, Year 83, ΠΓ, letter Bet between legs, 13.32 g



No. 188) Shekel, Year 83, ΠΓ, letter Bet between legs, 13.85 g



No. 189) Shekel, Year 83, ΠΓ, letter Aleph between legs, 13.65 g

2.79 Tyre, Shekel, Year 84, 43/42 BC

Coin No. 190 is an overdate, year 84 (ΠΔ) over 83 (ΠΓ) where the Δ is inscribed over the Γ.



No. 190) Shekel, Year 84, ΠΔ, over year 83 (ΠΓ), letter Aleph between legs, 14.16 g

Tyre, Shekel, Year 85, 42/41 BC

2.80 Tyre, Shekel, Year 85, 42/41 BC



No. 191) Shekel, Year 85, ΠΕ, unclear letter between legs, 14.13 g



No. 192) Shekel, Year 85, ΠΕ, Bet between legs, 14.04 g

2.81 Tyre, Shekel, Year 86, 41/40 BC

The next two shekels of year 86 (ΠΣ) have the same monogram but different Phoenician letters, Aleph and Bet.



No. 193) Shekel, Year 86, ΠΣ, letter Aleph between legs, 13.87 g



No. 194) Shekel, Year 86, ΠΣ, letter Bet between legs, 13.57 g



No. 195) Shekel, Year 86, Πζ, letter Bet between legs, 14.10 g

Table 2-26. Other Shekels for Year 86 (Πζ)

	Mono-gram	Letter Between Legs of Eagle	Weight (grams)	Source
No. 196)	Β	Bet	14.15	BMC

2.82 Tyre, Shekel, Year 87, 40/39 BC



No. 197) Shekel, Year 87, ΠΖ, letter Bet between legs, 14.00 g



No. 198) Shekel, Year 87, ΠΖ, letter Bet between legs, 13.90 g



No. 199) Shekel, Year 87, ΠΖ, letter Bet between legs, 14.04 g



No. 200) Shekel, Year 87, ΠΖ letter Bet between legs, 13.78 g

2.83 Tyre, Shekel, Year 88, 39/38 BC



No. 201) Shekel, Year 88, ΠΗ, no letter between legs, 14.14 g



No. 202) Shekel, Year 88, ΠΗ, unclear letter between legs, 13.73 g



Shekel, Year 88, ΠΗ, letter Aleph between legs,
14.18 g



No. 203) Shekel, Year 88, ΠΗ, unclear letter
between legs, unreported weight



No. 204) Shekel, Year 88, ΠΗ, letter Aleph
between legs, 13.84 g



No. 205) Shekel, Year 88, ΠΗ, letter Aleph
between legs, 13.66 g

Tyre, Shekel, Year 89, 38/37 BC

2.84 Tyre, Shekel, Year 89, 38/37 BC



No. 206) Shekel, Year 89, ΠΘ, letter Bet between legs, 13.10 g



No. 207) Shekel, Year 89, ΠΘ, letter Bet between legs, 14.01 g



No. 208) Shekel, Year 89, ΠΘ, letter Bet between legs, 14.10 g



No. 209) Shekel, Year 89, ΠΘ, letter Bet between legs, 13.70 g

2.85 Tyre, Shekel, Year 92, 35/34 BC

This shekel of year 92 was offered by Stacks auction, September 21, 2009, lot 106, described as a fourre (contemporary counterfeit), probably because of the light weight. This coin and the next of year 92 have the same monogram but different Phoenician letters.



No. 210) Shekel, Year 92, 9B , Aleph letter between legs, 12.11 g



No. 211) Shekel, Year 92, 9B , Aleph letter between legs, 14.01 g

2.86 Tyre, Shekel, Year 93, 34/33 BC



No. 212) Shekel, Year 93, 9Γ, no letter between legs, unreported weight



No. 213) Shekel, Year 93, 9Γ, letter Bet between legs, 13.68 g

2.87 Tyre, Shekel, Year 94, 33/32 BC

The area of the next shekel where the monogram would appear is damaged. It is retained temporarily in this listing because no other with year 94 has Phoenician letter Bet.



No. 214) Shekel, Year 94, 9Δ, letter Bet between legs, 13.47 g



No. 215) Shekel, Year 94, 9Δ, unclear letter between legs, 13.84 g

Table 2-27. Other Shekels for Year 94 (9Δ)

	Mono-gram	Letter Between Legs of Eagle	Weight (grams)	Source
No. 216)	BN	Aleph	13.83	BMC

The two shekels, Coin No. 217 with year 94 and Coin No. 234 showing year 100, both have a star counter mark on the bust.



No. 217) Shekel, Year 94, 9Δ, unclear letter between legs, 13.54 g, star counter stamp on the bust below ear

2.88 Tyre, Shekel, Year 95, 32/31 BC

There are several published records for shekels of year 95 (9E). However, neither the monogram nor most of the other data are known to me.

Table 2-28. Shekels for Year 95 (9E

	Mono-gram	Letter Between Legs of Eagle	Weight (grams)	Source
No. 218)	?	?	14.02	Qumran hoard
No. 219)	?	?	?	Lepczk auction 2, 11/1984 #226
No. 220)	?	?	?	Malter auction 5, 1985, #F18

2.89 Tyre, Shekel, Year 96, 31/30 BC

The next two shekels have the same date and monogram but different Phoenician letters, Aleph and Bet, between the legs of the eagle.



No. 221) Shekel, Year 96, 𐤀𐤌, letter Aleph between legs, 13.89 g



No. 222) Shekel, Year 96, 𐤁𐤌, letter Bet between legs, 14.27 g

Coin No. 223 and Coin No. 224 have the same date and monogram but different Phoenician letters, Aleph and Bet, between the legs of the eagle.



No. 223) Shekel, Year 96, 𐤀𐤌, letter Aleph between legs, 13.93 g



No. 224) Shekel, Year 96, 𐤁𐤌, letter Bet between legs, 14.16 g



No. 225) Shekel, Year 96, ΒΕΤ, letter Bet between legs, 14.00 g



No. 226) Shekel, Year 96, ΒΕΤ, letter Bet between legs, 14.26 g

2.90 Tyre, Shekel, Year 97, 30/29 BC



No. 227) Shekel, Year 97, 9Z, letter Bet between legs, 13.86 g



No. 228) Shekel, Year 97, 9Z, unclear letter between legs, 13.90 g

2.91 Tyre, Shekel, Year 98, 29/28 BC

There is a published record for a shekel of year 98, **ϣ**H . However, neither the monogram nor most of the other data are known to me.

Table 2-29. Other Shekels for Year 98 (ϣH

	Mono-gram	Letter Between Legs of Eagle	Weight (grams)	Source
No. 229)	?	?	14.02	Ophel hoard

2.92 Tyre, Shekel, Year 99, 28/27 BC



No. 230) Shekel, Year 99, 40 , letter Bet
between legs, 14.17 g



No. 231) Shekel, Year 99, 40 , letter Bet
between legs, 13.85 g

Tyre, Shekel, Year 99, 28/27 BC

2.93 Tyre, Shekel, Year 100, 27/26 BC



No. 232) Shekel, Year 100, P, letter Aleph between legs, 13.48 g



No. 233) Shekel, Year 100, P, letter Bet between legs, 13.73 g

Tyre, Shekel, Year 100, 27/26 BC

The two shekels, Coin No. 217 with year 94 and Coin No. 234 showing year 100, both have a star countermark on the bust.



No. 234) Shekel, Year 100, P, letter Bet between legs, 13.40 g

Table 2-30. Other Shekels for Year 100, P

	Mono-gram	Letter Between Legs of Eagle	Weight (grams)	Source
No. 235)	?	?	14.12	Qumran hoard, #67
No. 236)	?	?	14.01	Superior auction 7, 1986, #1421

2.94 Tyre, Shekel, Year 101, 26/25 BC

The next two shekels have identical features of date, monogram and Phoenician letter Bet. They are both retained because of the different styles of the date and monogram.




No. 237) Shekel, Year 101, PA, letter Bet between legs, 13.79 g



No. 238) Shekel, Year 101, PA, letter Bet between legs, 13.85 g

2.95 Tyre, Shekel, Year 102, 25/24 BC

Table 2-31. Other Shekels for Year 102 (PB)

	Mono-gram	Letter Between Legs of Eagle	Weight (grams)	Source
No. 239)		Bet	13.41	BMC

2.96 Tyre, Shekel, Year 103, 24/23 BC

On Coin No. 240, there is a star-like countermark on the obverse and under the ear of Melkart.



No. 240) Shekel, Year 103, ΠΓ, letter Bet between legs, 13.99 g



No. 241) Shekel, Year 103, ΠΓ, letter Bet between legs, 13.70 g



No. 242) Shekel, Year 103, $\Pi\Gamma$, letter Bet between legs, 13.66 g



No. 243) Shekel, Year 103, $\Pi\Gamma$, letter Bet between legs, 13.65 g

The reading of the date on Coin No. 244, year 103 (ΠΓ) is possibly incorrect. The date seems to be year 120 but the coin lacks the KP monogram that should appear on coins of this year.



**No. 244) Shekel, Year 103 (?), ΠΓ, letter Aleph
between legs, 13.53 g**

Tyre, Shekel, Year 104, 23/22 BC

2.97 Tyre, Shekel, Year 104, 23/22 BC



No. 245) Shekel, Year 104, PΔ, letter Bet between legs, 13.2 g



No. 246) Shekel, Year 104, PΔ, unclear letter between legs, 13.99 g

2.98 Tyre, Shekel, Year 105, 22/21 BC



No. 247) Shekel, Year 105, PE, letter Bet between legs, 14.14 g

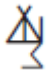


No. 248) Shekel, Year 105, PE, unclear letter between legs, 13.45 g



No. 249) Shekel, Year 105, PE, letter Bet between legs, 13.35 g

Table 2-32. Other Shekels for Year 105 (PE)

	Mono-gram	Letter Between Legs of Eagle	Weight (grams)	Source
No. 250)		Aleph	13.48	Ramat Rahel hoard

2.99 Tyre, Shekel, Year 106, 21/20 BC



No. 251) Shekel, Year 106, P_{ζ} , letter Bet between legs, 14.22 g



No. 252) Shekel, Year 106, P_{ζ} , letter Bet between legs, 13.75 g

Tyre, Shekel, Year 107, 20/19 BC

2.100 Tyre, Shekel, Year 107, 20/19 BC



**No. 253) Shekel, Year 107, PZ, letter Aleph
between legs, 14.22 g**



**No. 254) Shekel, Year 107, PZ, letter Bet
between legs, 13.61 g**



No. 255) Shekel, Year 107, PZ, letter Bet between legs, 14.12 g



No. 256) Shekel, Year 107, PZ, letter Bet between legs, 13.61 g



No. 257) Shekel, Year 107, PZ, letter Aleph
between legs, 13.99 g



No. 258) Shekel, Year 107, PZ, letter Aleph
between legs, 13.66 g



No. 259) Shekel, Year 107, PZ, letter Bet between legs, 13.69 g



No. 260) Shekel, Year 107, PZ, letter Bet between legs, 14.01 g

2.101 Tyre, Shekel, Year 108, 19/18 BC




No. 261) Shekel, Year 108, PH, letter Aleph between legs, 12.20 g

The shekel of year 108, PH, is the first that popular references traditionally assigns to the KP monogram. The monogram appears formed from three Greek letters, KAP.



No. 263) Shekel, Year 108, PH, letter Aleph between legs, 14.30 g

Table 2-33. Other Shekels for Year 108 (PH)

	Mono-gram	Letter Between Legs of Eagle	Weight (grams)	Source
No. 262)		Aleph	13.68	Ramat Rahel hoard

2.102 Tyre, Shekel, Year 109, 18/17 BC

On Coin No. 264, the Phoenician letter between the legs of the eagle is a letter Bet engraved over the letter Aleph.



No. 264) Shekel, Year 109, PΘ, letter Bet over Aleph between legs, 14.08 g



No. 265) Shekel, Year 109, PΘ, letter Bet between legs, 14.83 g

Tyre, Shekel, Year 110, 17/16 BC

2.103 Tyre, Shekel, Year 110, 17/16 BC

Coin No. 266 and Coin No. 267 have the same date and monogram but different Phoenician letters, Aleph and Bet, between the legs of the eagle.



No. 266) Shekel, Year 110, P|, letter Aleph between legs, 14.24 g



No. 267) Shekel, Year 110, P|, letter Bet between legs, 14.07 g

2.104 Tyre, Shekel, Year 111, 16/15 BC

Coin No. 269 is the last shekel without the KP monogram, which started later this year. See Coin No. 270 for the first with the KP monogram.

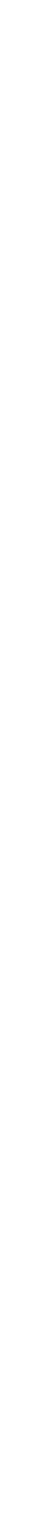


No. 268) Shekel, Year 110, P|, letter Bet between legs, 13.91 g



No. 269) Shekel, Year 111, P|A, no letter between legs, 14.03 g

Tyre, Shekel, Year 111, 16/15 BC



3. Tyre Shekels (KP Monogram), DCA 920

3.1 Tyre, Shekel, Year 111, 16/15 BC

Not only is Coin No. 270 the first where the KP monogram is used, it is the first to show a second monogram accompanying the KP. This double monogram continued on nearly every shekel until the end of the series.



No. 270) Shekel, Year 111, P|A, letter Bet between legs, 12.74 g

3.2 Tyre, Shekel, Year 112, 15/14 BC

There are several published records for shekels of 112 (P|B). However, neither the monogram nor most of the other data are known to me.

The Qumran hoard contained 12 examples of this date. The weights ranged from 13.51 to 14.32 grams. The Qumran inventory numbers ranged from #112 through #123.

Table 3-1. Other Shekels for Year 112 (P|B)

	Mono-gram	Letter Between Legs of Eagle	Weight (grams)	Source
No. 271)	?	?	13.51 to 14.32	Qumran hoard 112 through 123

Tyre, Shekel, Year 113, 14/13 BC

3.3 Tyre, Shekel, Year 113, 14/13 BC



No. 272) Shekel, Year 113, P|Γ, letter Bet between legs, 14.06 g



No. 273) Shekel, Year 113, P|Γ, letter Bet between legs, 13.91 g



3.4 Tyre, Shekel, Year 114, 13/12 BC

The next two shekels have the same year 114 and monogram but different Phoenician letters.



**No. 274) Shekel, Year 114, P|Δ, letter Aleph
between legs, 14.01 g**



**No. 275) Shekel, Year 114, P|Δ, letter Bet
between legs, 13.65 g**



No. 276) Shekel, Year 114, P|Δ, letter Aleph
between legs, 14.17 g



No. 277) Shekel, Year 114, P|Δ, letter Bet
between legs, 14.09 g



No. 278) Shekel, Year 114, P|Δ, letter Aleph
between legs, 13.71 g

3.5 Tyre, Shekel, Year 115, 12/11 BC

The next two shekels of year 115 (P|E) have the same monogram but differ in their Phoenician letters. A shekel similar to No. 279 with weight 13.83 grams was found in the Ramat Rahel hoard.



**No. 279) Shekel, Year 115, P|E, letter Aleph
between legs, 13.27 g**



**No. 280) Shekel, Year 115, P|E, letter Bet
between legs, 14.08 g**

No. 281 and No. 282 have the same date, year 115, and monograms but different Phoenician letters between the legs of the eagle.



No. 281) Shekel, Year 115, P|E, letter Aleph between legs, unreported weight



No. 282) Shekel, Year 115, P|E, letter Bet between legs, 15.90 g

3.6 Tyre, Shekel, Year 116, 11/10 BC

The next two shekels have the same date and monogram but different Phoenician letters between the legs of the eagle.



**No. 283) Shekel, Year 116, P|Σ, letter Aleph
between legs, 14.14 g**



**No. 284) Shekel, Year 116, P|Σ, letter Bet
between legs, 13.86 g**

The next two shekels have the same date and monogram but different Phoenician letters between the legs of the eagle.



No. 285) Shekel, Year 116, P| ζ , letter Aleph between legs, 14.18 g



No. 286) Shekel, Year 116, P| ζ , letter Bet between legs, 13.90 g

3.7 Tyre, Shekel, Year 117, 10/9 BC



No. 287) Shekel, Year 117, P|Z, letter Aleph between legs, 14.09 g

There are several other published records for shekels of year 117, P|Z. However, neither the monogram nor most of the other data are known to me.

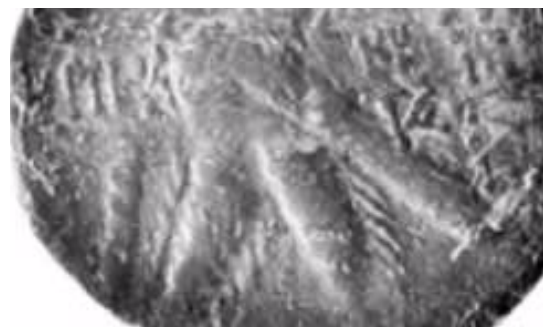
Table 3-2. Other Shekels for Year 117, P|Z

	Mono-gram	Letter Between Legs of Eagle	Weight (grams)	Source
No. 288)	?	?	14.27	Qumran hoard, #151
No. 289)	?	?	?	NY ANS

3.8 Tyre, Shekel, Year 118, 9/8 BC



No. 290) Shekel, Year 118, P|H, letter Aleph between legs, 13.95 g



No. 291) Shekel, Year 118, P|H, unclear letter between legs, 12.96 g

There are several other published records for shekels of year 118, P|H. However, neither the monogram nor most of the other data are known to me.

Table 3-3. Other shekels for Year 118, P|H

	Mono-gram	Letter Between Legs of Eagle	Weight (grams)	Source
No. 292)	?	14.28	Qumran hoard #153	?
No. 293)	?	?	Ophel hoard #16	?
No. 294)	?	13.95	CNG III, 1995, #399	?

Tyre, Shekel, Year 118, 9/8 BC

3.9 Tyre, Shekel, Year 120, 7/6 BC



**No. 295) Shekel, Year 120, PK, letter Aleph
between legs, 13.76g**

3.10 Tyre, Shekel, Year 121, 6/5 BC

Besides RPC, there is one published record for a shekel of year 121, PKA. However, neither the monogram nor most of the other data are known to me.

Table 3-4. Other Shekels for Year 121, PKA

	Mono-gram	Letter Between Legs of Eagle	Weight (grams)	Source
No. 296)	?	?	13.92	Lebanon hoard
No. 297)	?	?	?	RPC1s.46 47A

3.11 Tyre, Shekel, Year 122, 5/4 BC

There is one reported shekel dated year 122, PKB, listed as RPC1s.4647C. The monogram, letter between the eagle legs, weight and the source were not reported.

Table 3-5. Other Shekels for Year 122 (PKB)

	Mono-gram	Letter Between Legs of Eagle	Weight (grams)	Source
No. 298)	?	?	?	RPC1s. 4647C

3.12 Tyre, Shekel, Year 123, 4/3 BC



No. 299) Shekel, Year 123, PKΓ, letter Bet between legs, 14.21 g

3.13 Tyre, Shekel, Year 124, 3/2 BC



No. 300) Shekel, Year 124, PKΔ, letter Aleph between legs, 14.3 g

Tyre, Shekel, Year 125, 2/1 BC

3.14 Tyre, Shekel, Year 125, 2/1 BC



No. 301) Shekel, Year 125, PKE, letter Bet
between legs, 14.26 g

3.15 Tyre, Shekel, Year 126, 1 BC / 1 AD

The next three shekels of year 126 (PK ζ) appear to have nearly identical monograms. However, one has no Phoenician letter while the others have Aleph and Bet.



No. 302) Shekel, Year 126, PK ζ , no letter between legs, 14.29 g



No. 303) Shekel, Year 126, PK ζ , letter Aleph between legs, unreported weight

Tyre, Shekel, Year 126, 1 BC / 1 AD



No. 304) Shekel, Year 126, PKC, letter Bet
between legs, 13.97 g

3.16 Tyre, Shekel, Year 127, 1/2 AD

The next two shekels of year 127 (PKZ) have the same monogram but different Phoenician letters, Aleph and Bet.



**No. 305) Shekel, Year 127, PKZ, letter Aleph
between legs, 14.30 g**



**No. 306) Shekel, Year 127, PKZ, letter Bet
between legs, 14.16 g**

Tyre, Shekel, Year 128, 2/3 AD

3.17 Tyre, Shekel, Year 128, 2/3 AD



**No. 307) Shekel, Year 128, PKH, no letter
between legs, 13.95 g**



**No. 308) Shekel, Year 128, PKH, letter Aleph
between legs, 14.22 g**



**No. 309) Shekel, Year 128, PKH, letter Bet
between legs, 14.29 g**



**No. 310) Shekel, Year 128, PKH, letter Bet
between legs, 14.28 g**

3.18 Tyre, Shekel, Year 129, 3/4 AD

The monograms on the next two shekels of year 129 (PKΘ) are possibly the same.



No. 311) Shekel, Year 129, PKΘ, unclear letter between legs, 13.96 g



No. 312) Shekel, Year 129, PKΘ, letter Aleph between legs, 13.92 g

3.19 Tyre, Shekel, Year 130, 4/5 AD

The next two shekels of year 130 (PA) appear to have the same date and monogram but different Phoenician letters, Aleph and Bet.



No. 313) Shekel, Year 130, PA, letter Aleph between legs, 14.30 g



No. 314) Shekel, Year 130, PA, letter Bet between legs, unreported weight

Tyre, Shekel, Year 130, 4/5 AD



No. 315) Shekel, Year 130, PΛ, letter Aleph
between legs, unreported weight

3.20 Tyre, Shekel, Year 131, 5/6 AD



**No. 316) Shekel, Year 131, PAA, letter Aleph
between legs, 14.29 g**



**No. 317) Shekel, Year 131, PAA, letter Bet
between legs, 14.24 g**

3.21 Tyre, Shekel, Year 132, 6/7 AD

The next two shekels of year 132 (PAB) display the same monogram but different Phoenician letters, Aleph and Bet, between the legs of the eagle.



No. 318) Shekel, Year 132, PAB, letter Aleph between legs, 14.29 g



No. 319) Shekel, Year 132, PAB, letter Bet between legs, 14.32 g

3.22 Tyre, Shekel, Year 133, 7/8 AD



**No. 320) Shekel, Year 133, ΠΑΓ, letter Aleph
between legs, 14.17 g**

3.23 Tyre, Shekel, Year 134, 8/9 AD



**No. 321) Shekel, Year 134, ΠΑΔ, letter Bet
between legs, 14.25 g**

Tyre, Shekel, Year 135, 9/10 AD

3.24 Tyre, Shekel, Year 135, 9/10 AD



No. 322) Shekel, Year 135, PAE, letter Bet between legs, 14.27 g



No. 323) Shekel, Year 135, PAE, strange letter, possibly Aleph, between legs, 14.30 g

3.25 Tyre, Shekel, Year 136, 10/11 AD



No. 324) Shekel, Year 136, PAÇ, letter Bet between legs, 14.26 g

3.26 Tyre, Shekel, Year 137, 11/12 AD



No. 325) Shekel, Year 137, PAZ, letter Bet between legs, 14.28 g

Tyre, Shekel, Year 138, 12/13 AD

3.27 Tyre, Shekel, Year 138, 12/13 AD



**No. 326) Shekel, Year 138, PAH , letter Aleph
between legs, 14.03g**

3.28 Tyre, Shekel, Year 139, 13/14 AD



**No. 327) Shekel, Year 139, $\text{PA}\Theta$, letter Bet
between legs, 13.10 g**

3.29 Tyre, Shekel, Year 140, 14/15 AD



**No. 328) Shekel, Year 140, PM, letter Bet
between legs, unreported weight**



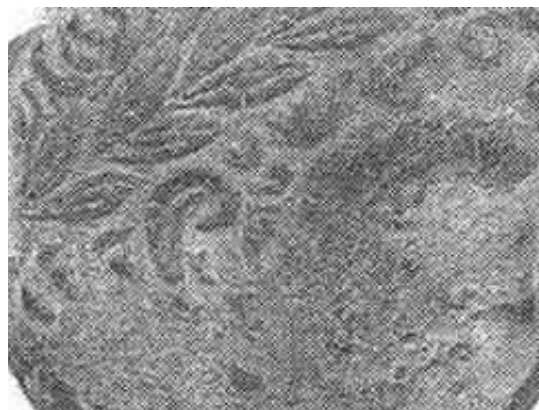
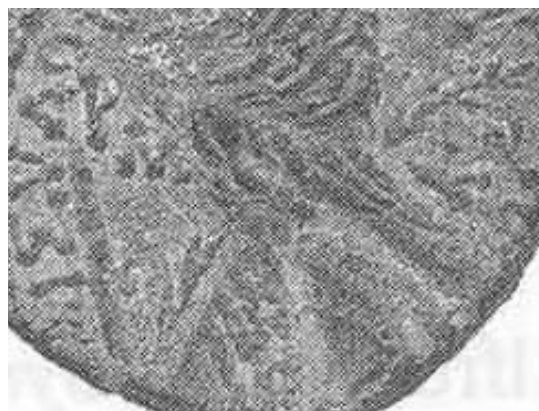
**No. 329) Shekel, Year 140, PM, letter Bet
between legs, unreported weight**

Tyre, Shekel, Year 140, 14/15 AD



No. 330) Shekel, Year 140, PM, unclear letter between legs, 14.30 g

The next shekel is entirely bronze. According to the auction catalog, Superior, December 9, 1998, lot 1562, there is no trace of silver. The coin shows the date, Year 140, PM, but the monogram and letter beneath the eagle are not clear. The scan from the catalog is poor.



No. 331) Shekel, Year 140, PM, unclear letter between legs, 12.5g

3.30 Tyre, Shekel, Year 141, 15/16 AD



No. 332) Shekel, Year 141, PMA, letter Bet between legs, 14.12 g

3.31 Tyre, Shekel, Year 142, 16/17 AD



No. 333) Shekel, Year 142, PMB, letter Bet between legs, 14.10 g

Tyre, Shekel, Year 143, 17/18 AD

3.32 Tyre, Shekel, Year 143, 17/18 AD



**No. 334) Shekel, Year 143, PMΓ, letter Bet
between legs, 14.16 g**



**No. 335) Shekel, Year 143, PMΓ, letter Bet
between legs, 14.16 g**

3.33 Tyre, Shekel, Year 144, 18/19 AD

The next two shekels of year 144 (PMΔ) appear to have the same date and monogram but differ in the letter between the legs of the eagle. The third shekel has a different monogram.



No. 336) Shekel, Year 144, PMΔ, letter Bet between legs, unreported weight



No. 337) Shekel, Year 144, PMΔ, letter Aleph between legs, 13.96 g

Tyre, Shekel, Year 144, 18/19 AD



No. 338) Shekel, Year 144, PMΔ, letter Bet
between legs, 14.02 g

3.34 Tyre, Shekel, Year 145, 19/20 AD

The next two coins have similar monograms and the same Phoenician letter Aleph. The second might be just a later die state of the former coin.



**No. 339) Shekel, Year 145, PME, letter Aleph
between legs, 13.94 g**



**No. 340) Shekel, Year 145, PME, letter Bet
between legs, 13.94 g**



**No. 341) Shekel, Year 145, PME, letter Bet
between legs, 14.15 g**



**No. 342) Shekel, Year 145, PME, letter Bet
between legs, 13.67 g**



**No. 343) Shekel, Year 145, PME, letter Bet
between legs, 13.64 g**

Tyre, Shekel, Year 146, 20/21 AD

3.35 Tyre, Shekel, Year 146, 20/21 AD



No. 344) Shekel, Year 146, PM ζ , unclear letter between legs, 14.12 g



No. 345) Shekel, Year 146, PM ζ , letter Bet between legs, unreported weight



**No. 346) Shekel, Year 146, PM ζ , letter Bet
between legs, 12.98 g**

3.36 Tyre, Shekel, Year 147, 21/22 AD




No. 347) Shekel, Year 147, PMZ, no letter between legs, unreported weight



No. 348) Shekel, Year 147, PMZ, letter Bet between legs, 14.18 g

The shekel below appears to have the same monogram as shown in the above photograph.

Table 3-6. Other Shekels for Year 147, PMZ

	Mono-gram	Letter Between Legs of Eagle	Weight (grams)	Source
No. 349)		Bet	14.18	Isfiya hoard

3.37 Tyre, Shekel, Year 148, 22/23 AD



No. 350) Shekel, Year 148, PMH, no letter between legs, 14.19 g



No. 351) Shekel, Year 148, PMH, no letter between legs, 13.83 g

Table 3-7. Other Shekels for Year 148 (PMH)

	Mono-gram	Letter Between Legs of Eagle	Weight (grams)	Source
No. 352)	NE	not clear	14.17	BMC

Tyre, Shekel, Year 149, 23/24 AD

3.38 Tyre, Shekel, Year 149, 23/24 AD



**No. 353) Shekel, Year 149, PMΘ, unclear letter
between legs, 13.94 g**

3.39 Tyre, Shekel, Year 150, 24/25 AD



No. 354) Shekel, Year 150, PN, no letter between legs, 14.21 g



No. 355) Shekel, Year 150, PN, unclear letter between legs, 14.19 g

Tyre, Shekel, Year 151, 25/26 AD

3.40 Tyre, Shekel, Year 151, 25/26 AD



**No. 356) Shekel, Year 151, PNA, no letter
between legs, 14.13 g**

3.41 Tyre, Shekel, Year 152, 26/27 AD



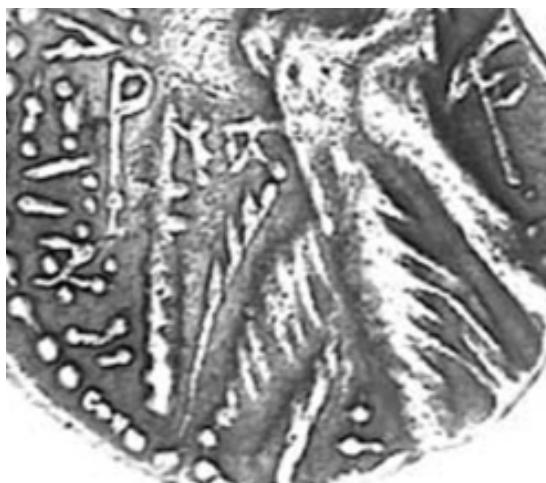
No. 357) Shekel, Year 152, PNB, no letter
between legs, 13.26 g



No. 358) Shekel, Year 152, unclear letter
between legs, 14.18 g

3.42 Tyre, Shekel, Year 153, 27/28 AD

Coin No. 359 of year 153 (PNT) has an overdate. The digit 3 (Γ) is inscribed over the digit 1 (Α). Thus the coin has year 153 over 151.



No. 359) Shekel, Year 153, PNT, no letter between legs, 13.70 g




No. 360) Shekel, Year 153, PNT, no letter between legs, unreported weight

On the next shekel, the reading of the date as year 153 might not be correct. It is perhaps year 143.



No. 361) Shekel, Year 153, PNT, no letter between legs, 12.86 g

Table 3-8. Other Shekels for Year 153 (PNT)

	Mono-gram	Letter Between Legs of Eagle	Weight (grams)	Source
No. 362)		unclear letter	13.87	Isfiya hoard

Tyre, Shekel, Year 154, 28/29 AD

3.43 Tyre, Shekel, Year 154, 28/29 AD



**No. 363) Shekel, Year 154, PNA, no letter
between legs, 14.07 g**

3.44 Tyre, Shekel, Year 155, 29/30 AD



**No. 364) Shekel, Year 155, PNE, no letter
between legs, 14.24 g**

3.45 Tyre, Shekel, Year 156, 30/31 AD



No. 365) Shekel, Year 156, PNÇ, no letter between legs, 14.14 g

The monogram on Coin No. 366 might be the same as that above in Coin No. 365.

Table 3-9. Other Shekels for Year 156 (PNÇ)

	Mono-gram	Letter Between Legs of Eagle	Weight (grams)	Source
No. 366)	ζ	unclear letter	14.07	Isfiya hoard



No. 367) Shekel, Year 156, PNÇ, no letter between legs, unreported weight

Tyre, Shekel, Year 156, 30/31 AD



No. 368) Shekel, Year 156, unclear letter
between legs, 14.37 g

3.46 Tyre, Shekel, Year 157, 31/32 AD



No. 369) Shekel, Year 157, PNZ, no letter between legs, 13.93 g



No. 370) Shekel, Year 157, letter Bet between legs, 14.22g



No. 371) Shekel, Year 157, letter Bet between legs, 14.19 g

The monogram on Coin No. 372 might be the same as that above in Coin No. 371.

Table 3-10. Other Shekels for Year 157 (PNZ)

	Mono-gram	Letter Between Legs of Eagle	Weight (grams)	Source
No. 372)	Β	unclear letter	14.16	Isfiya hoard

3.47 Tyre, Shekel, Year 158, 32/33 AD



No. 373) Shekel, Year 158, PNH, no letter
between legs, 14.34 g

Table 3-11. Other Shekels for Year 158 (PNH)

	Mono- gram	Letter Between Legs of Eagle	Weight (grams)	Source
No. 374)	△	unclear letter	14.16	Isfiya hoard

3.48 Tyre, Shekel, Year 159, 33/34 AD



No. 375) Shekel, Year 159, PNΘ, letter Aleph between legs, 13.99 g



No. 376) Shekel, Year 159, PNΘ, letter Bet between legs, unreported weight

The monogram on Coin No. 377 might be the same as that above in Coin No. 376.

Table 3-12. Other Shekels for Year 159 (PNΘ)

	Mono-gram	Letter Between Legs of Eagle	Weight (grams)	Source
No. 377)	ⲉ	Bet	13.66	BMC



**No. 378) Shekel, Year 159, PNΘ, letter Aleph
between legs, 14.23 g**



**No. 379) Shekel, Year 159, PNΘ, letter Aleph
between legs, 14.23 g**

Tyre, Shekel, Year 159, 33/34 AD

3.49 Tyre, Shekel, Year 160, 34/35 AD



No. 380) Shekel, Year 160, PΞ, unclear letter between legs, 13.74 g



No. 381) Shekel, Year 160, PΞ, letter Bet between legs, 13.99 g

Tyre, Shekel, Year 160, 34/35 AD



**No. 382) Shekel, Year 160, PΞ, unclear letter
between legs, 14.47 g**

3.50 Tyre, Shekel, Year 161, 35/36 AD



No. 383) Shekel, Year 161, PEA, letter Aleph
between legs, 14.31 g



No. 384) Shekel, Year 161, PEA, letter Bet
between legs, 13.55 g

Tyre, Shekel, Year 162, 36/37 AD

3.51 Tyre, Shekel, Year 162, 36/37 AD



No. 385) Shekel, Year 162, PEB, letter Aleph
between legs, weight not published



No. 386) Shekel, Year 162, PEB, letter Aleph
between legs, weight not published



No. 387) Shekel, Year 162, PEB, unclear letter
between legs, 13.88 g

3.52 Tyre, Shekel, Year 163, 37/38 AD

The next two shekels of year 163 (PΞΓ) have the same monogram but different Phoenician letters between the legs of the eagle.



No. 388) Shekel, Year 163, PΞΓ, letter Aleph
between legs, 14.23 g



No. 389) Shekel, Year 163, PΞΓ, letter Bet
between legs, 14.43 g

3.53 Tyre, Shekel, Year 164, 38/39 AD



No. 390) Shekel, Year 165, PEE, letter Bet between legs, 14.11 g

3.54 Tyre, Shekel, Year 165, 39/40 AD



No. 395) Shekel, Year 165, PEE, letter Bet between legs, 13.87 g

Table 3-13. Other Shekels for Year 164 (PEΔ)

	Mono-gram	Letter Between Legs of Eagle	Weight (grams)	Source
No. 391)	?	?	?	Harmer Rooke 3, 1974 #942
No. 392)	?	?	?	Empire 1991 #50
No. 393)	?	?	?	Berk 12, 1993 #189
No. 394)	?	?	14.19	Hirsch 9, 2004 #2046

3.55 Tyre, Shekel, Year 166, 40/41 AD

RPC1s.4669A listed a shekel for year 166, PΞς. It gave neither identification of its monogram, letter beneath the eagle, nor its weight.

Table 3-14. Other Shekels for Year 166 (PΞς)

	Mono-gram	Letter Between Legs of Eagle	Weight (grams)	Source
No. 396)	?	?	?	RPC1s. 4669A

3.56 Tyre, Shekel, Year 167, 41/42 AD



No. 397) Shekel, Year 167, PΞZ, letter Aleph between legs, 13.10 g

3.57 Tyre, Shekel, Year 168, 42/43 AD




No. 398) Shekel, Year 168, PEH, letter Bet between legs, 14.20 g

3.58 Tyre, Shekel, Year 169, 43/44 AD



No. 399) Shekel, Year 169, PEΘ, letter Bet between legs, 14.09 g

Table 3-15. Other Shekels for Year 169 (PEΘ)

	Mono-gram	Letter Between Legs of Eagle	Weight (grams)	Source
No. 400)	B X	Aleph	14.29	Isfiya hoard
No. 401)		unclear letter	14.25	Isfiya hoard

3.59 Tyre, Shekel, Year 170, 44/45 AD



No. 402) Shekel, Year 170, PO, letter Bet between legs, 14.10 g



No. 403) Shekel, Year 170, PO, letter Bet between legs, 14.2 g

Table3-16. Other Shekels for Year 170 (PO)

	Mono-gram	Letter Between Legs of Eagle	Weight (grams)	Source
No. 404)	D E	Aleph	14.23	Isfiya hoard
No. 405)	B X	Bet	14.19	Isfiya hoard

3.60 Tyre, Shekel, Year 171, 45/46 AD



No. 406) Shekel, Year 171, POA, letter Bet between legs, 14.04 g



No. 407) Shekel, Year 171, POA, letter Bet between legs, unreported weight

Table 3-17. Other Shekels for Year 171 (POA)

	Mono-gram	Letter Between Legs of Eagle	Weight (grams)	Source
No. 408)		Aleph	14.21	Isfiya Hoard

Tyre, Shekel, Year 172, 46/47 AD

3.61 Tyre, Shekel, Year 172, 46/47 AD



No. 409) Shekel, Year 172, POB, unclear letter between legs, 14.10 g

The Isfiya hoard contained a shekel, No. 414, with the same monogram as No. 410 but with Phoenician letter Aleph instead of Bet.



No. 410) Shekel, Year 172, POB, letter Bet between legs, unreported weight





No. 411) Shekel, Year 172, POB, letter Aleph between legs, 14.30 g



No. 412) Shekel, Year 172, POB, letter Aleph between legs, 14.30 g

Table 3-18. Other Shekels for Year 172 (POB))

	Mono-gram	Letter Between Legs of Eagle	Weight (grams)	Source
No. 413)		Aleph	13.86	BMC
No. 414)		Aleph	14.14	Isfiya Hoard

3.62 Tyre, Shekel, Year 173, 47/48 AD



No. 415) Shekel, Year 173, POΓ, unclear letter between legs, 13.08 g



No. 416) Shekel, Year 173, POΓ, letter Aleph between legs, unreported weight

Table 3-19. Other Shekels for Year 173 (POΓ)

	Mono-gram	Letter Between Legs of Eagle	Weight (grams)	Source
No. 417)	W	Aleph	14.33	Isfiya hoard

3.63 Tyre, Shekel, Year 174, 48/49 AD

No. 418 is an overdate. Refer to the introduction for a list of all overdates on the shekels.¹



No. 418) Shekel, Year 174 over 173, ΠΟΔ, where Δ is engraved over Γ, no letter between legs, 13.84 g



No. 419) Shekel, Year 174, ΠΟΔ, letter Bet between legs, 13.90 g

1. My thanks to David Vagi for pointing out this coin to me.



No. 420) Shekel, Year 174, POΔ, letter Aleph between legs, unreported weight

3.64 Tyre, Shekel, Year 175, 49/50 AD



No. 421) Shekel, Year 175, POE, letter Bet between legs, unreported weight

Table 3-20. Other Shekels for Year 175 (POE)

	Mono-gram	Letter Between Legs of Eagle	Weight (grams)	Source
No. 422)	ⲓⲁ	Bet	14.42	Isfiya hoard

3.65 Tyre, Shekel, Year 176, 50/51 AD

Coin No. 423 has an overdate, year 176 over 175 where the 6 (ς) is engraved over 5 (Ε).



No. 423) Shekel, Year 176, ΠΟC, over Year 175, letter Bet between legs, 14.17 g

The next two shekels have the same date and monogram but different Phoenician letters between the eagle legs.



No. 424) Shekel, Year 176, ΠΟC, letter Aleph between legs, 13.10 g

Tyre, Shekel, Year 176, 50/51 AD



No. 425) Shekel, Year 176, POC , letter Bet
between legs, 13.78 g

3.66 Tyre, Shekel, Year 177, 51/52 AD

The next two shekels of year 177 (POZ) have the same monogram but different Phoenician letter between the legs of the eagle.



No. 426) Shekel, Year 177, POZ, letter Bet between legs, 13.90 g



No. 427) Shekel, Year 177, POZ, letter Aleph between legs, 14.20 g

Tyre, Shekel, Year 177, 51/52 AD



No. 428) Shekel, Year 177, POZ, letter Bet
between legs, 13.90 g

3.67 Tyre, Shekel, Year 178, 52/53AD

On Coin No. 429, year 178 (POH), the normal KP monogram appears reversed as PK. This coin is from the Isfiya hoard. On Coin No. 430, the KP monogram is expressed normally.

Also, these next two shekels appear to have the same monogram but the Phoenician letters Aleph and Bet are different.



No. 429) Shekel, Year 178, POH, letter Aleph between legs, 13.24 g



No. 430) Shekel, Year 178, POH, letter Bet between legs, unreported weight

3.68 Tyre, Shekel, Year 179, 53/54AD



No. 431) Shekel, Year 179, POΘ, letter Aleph between legs, 14.02 g

There are two additional published records for shekels of year 179, POΘ. However, neither the monogram nor most of the other data are known to me.

Table 3-21. Other Shekels for Year 179 (POΘ)

	Mono-gram	Letter Between Legs of Eagle	Weight (grams)	Source
No. 432)	?	?	13.93	Bir-Zeit hoard #37
No. 433)	?	?	?	Hirsch 9, 1993 #643

3.69 Tyre, Shekel, Year 180, 54/55 AD



No. 434) Shekel, Year 180, ΠΠ, letter Aleph between legs, 14.04g

3.70 Tyre, Shekel, Year 181, 55/56 AD

Table 3-22. Other Shekels for Year 181 (ΠΠΑ)

	Mono-gram	Letter Between Legs of Eagle	Weight (grams)	Source
No. 435)	ΕΑ	letter off flan	14.11	BMC

3.71 Tyre, Shekel, Year 182, 56/57 AD

Besides RPC1s.4679A, there are four published records for shekels of year 182, ΠΠΒ. However, neither the monogram nor most of the other data are known to me. Examples of these citations follow.

Table 3-23. Other Shekels for Year 182 (ΠΠΒ)

	Mono-gram	Letter Between Legs of Eagle	Weight (grams)	Source
No. 436)	?	?	14.00	Bir Zeit hoard #41
No. 437)	?	?	?	Seaby 825, 1985, #B188

3.72 Tyre, Shekel, Year 183, 57/58 AD



Shekel, Year 183 (PΠΓ), letter Aleph between legs, 12.27 g

There are additional published records for shekels of year 183, PΠΓ. However, neither the monogram nor most of the other data are known to me.

Table 3-24. Other Shekels for Year 183 (PΠΓ)

	Mono-gram	Letter Between Legs of Eagle	Weight (grams)	Source
No. 438)	?	?	13.70	Bir Zeit hoard #42
No. 439)	?	?	13.96	Bir Zeit hoard #43

3.73 Tyre, Shekel, Year 184, 58/59 AD

Besides RPC 1.4680, there are several published records for shekels of year 184, PΠΔ. However, neither the monogram nor most of the other data are known to me.

Table 3-25. Other Shekels for Year 184 (PΠΔ)

	Mono-gram	Letter Between Legs of Eagle	Weight (grams)	Source
No. 440)	?	?	14.12	NY American Numismatic Society

3.74 Tyre, Shekel, Year 185, 59/60 AD



Shekel, Year 185 (ΠΙΕ), letter Aleph between legs, unreported weight

3.75 Tyre, Shekel, Year 186, 60/61 AD

No. 441 was offered in Gemini VI, January 10, 2010, lot 261.



No. 441) Shekel, Year 186, ΠΙΖ, letter Bet between legs, 13.73 g

There is an additional published record, No. 442, for a shekel of year 186, ΠΙΖ. However, neither the monogram nor most of the other data are known to me.

Table 3-26. Other Shekels for Year 186 (ΠΙΖ)

	Mono-gram	Letter Between Legs of Eagle	Weight (grams)	Source
No. 442)	?	?	?	Bir Zeit hoard #43

3.76 Tyre, Shekel, Year 187, 61/62 AD



No. 443) Shekel, Year 187, PΠZ, letter Bet between legs, 13.66 g

3.77 Tyre, Shekel, Year 188, 62/63 AD

RPC1s.4680C indicates a listing for a shekel of year 188, PΠH. It gives no identification of its monogram, letter beneath the eagle, nor its weight.

Table 3-27. Other Shekels for Year 188 (PΠH)

	Mono-gram	Letter Between Legs of Eagle	Weight (grams)	Source
No. 444)	?	?	?	RPC1s. 4680C

3.78 Tyre, Shekel, Year 189, 63/64 AD

Besides, RPC1s.4680D, there is a published record for a shekel of year 189, PΠΘ. However, neither the monogram nor most of the other data are known to me.

Table 3-28. Other Shekels for Year 189 (PΠΘ)

	Mono-gram	Letter Between Legs of Eagle	Weight (grams)	Source
No. 445)	?	?	14.12	Gamla hoard #18388

3.79 Tyre, Shekel, Year 190, 64/65 AD

It appears that the date area of No. 446 was removed in antiquity and replaced with the current year, 190, **ΠϞ**.



No. 446) Shekel, Year 190, **ΠϞ**, letter Bet between legs, 13.80 g

Tyre, Shekel, Year 190, 64/65 AD

3.80 Tyre, Shekel, Year Not Readable

There are many shekels where the date is crudely engraved and not readable. The examples in this section show an apparent KP above an indeterminate monogram.



No. 447) Shekel, year not readable, unclear letter between legs, 14.26 g



No. 448) Shekel, year not readable, unclear letter between legs, 14.20 g

Tyre, Shekel, Year Not Readable

4. Tyre Half Shekels, DCA 921

4.1 Tyre Half Shekel, Year 1, 126/125 BC

Table 4-1. Half Shekel for Year 1 (A)

	Mono-gram	Letter Between Legs of Eagle	Weight (grams)	Source
No. 449)	M	(none)	6.75	BMC

4.2 Tyre Half Shekel, Year 2, 125/124 BC



No. 450) Half Shekel, Year 2, LB, no letter between legs, 6.94 g

4.3 Tyre Half Shekel, Year 4, 123/122 BC



No. 451) Half Shekel, Year 4, L Δ , unclear letter between legs, unclear monogram, 6.76 g

Table 4-2. Half Shekel for Year 4 (Δ)

	Mono-gram	Letter Between Legs of Eagle	Weight (grams)	Source
No. 452)	ZB	Bet	7.18	BMC

4.4 Tyre Half Shekel, Year 5, 122/121 BC

Table 4-3. Half Shekel for Year 5 (LE)

	Mono-gram	Letter Between Legs of Eagle	Weight (grams)	Source
No. 453)	M	Bet	6.59	BMC

4.5 Tyre Half Shekel, Year 6, 121/120 BC



No. 454) Half Shekel, Year 6, L $]$, letter Bet between legs, no monogram, 6.41 g


4.6 Tyre Half Shekel, Year 7, 120/119 BC



No. 455) Half Shekel, Year 9, L \ominus , letter Aleph between legs, 6.88 g

4.7 Tyre Half Shekel, Year 8, 119/118 BC

Table 4-4. Half Shekel for Year 8 (LH)

	Mono-gram	Letter Between Legs of Eagle	Weight (grams)	Source
No. 456)		Bet	6.77	BMC

4.8 Tyre, Half Shekel, Year 9, 118/117 BC



No. 457) Half Shekel, Year 9, L \ominus , letter Bet between legs, 6.77 g

Tyre, Half Shekel, Year 11, 116/115 BC

4.9 Tyre, Half Shekel, Year 11, 116/115 BC



No. 458) Half Shekel, Year 11, Α, letter Bet between legs, 7.11 g

4.10 Tyre, Half Shekel, Year 13, 114/113 BC



No. 459) Half Shekel, Year 13, Γ, no letter between legs, 7.08 g

4.11 Tyre, Half Shekel, Year 14, 113/112 BC



No. 460) Half Shekel, Year 14, Δ|, letter Bet between legs, unreported weight

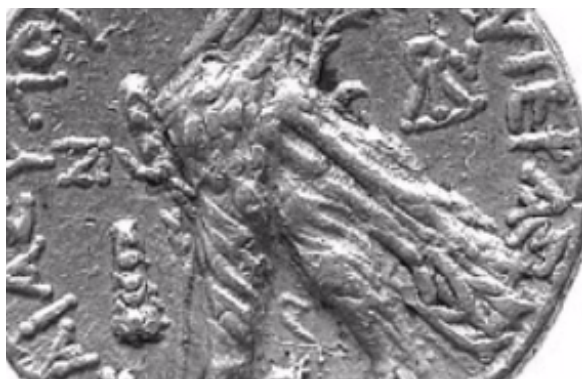
4.12 Tyre, Half Shekel, Year 16, 111/110 BC



No. 461) Half Shekel, Year 16, ζ|, letter Bet between legs, 7.08 g

Tyre, Half Shekel, Year 17, 110/109 BC

4.13 Tyre, Half Shekel, Year 17, 110/109 BC



**No. 462) Half Shekel, Year 17, ZN, letter Bet
between legs, 7.09 g**

Note: A half shekel described as year 17 (Z), “18 AD”, was offered in the Superior Auction, December 8, 1995, lot 1563. The weight was listed as 7.1 grams. However, the description was incorrect. While the lot description for this half shekel said the date is year 17, the date appeared possibly to be year 143. Beside showing a KP monogram, the additional monogram on the coin was similar to that on the year 143 half shekel, (No. 535) shown in this photo supplement.

4.14 Tyre, Half Shekel, Year 20, 107/106 BC



**No. 463) Half Shekel, Year 20, LK, letter Bet
between legs, 7.00 g**

4.15 Tyre, Half Shekel, Year 21, 106/105 BC



**No. 464) Half Shekel, Year 21, AK, letter Aleph
between legs, 6.96 g**

Tyre, Half Shekel, Year 22, 105/104 BC

4.16 Tyre, Half Shekel, Year 22, 105/104 BC



No. 465) Half Shekel, Year 22, BK, letter Aleph
between legs, unreported weight

4.17 Tyre, Half Shekel, Year 24, 103/102 BC



No. 466) Half Shekel, Year 24, ΔK, letter Aleph
between legs, 6.71 g




No. 467) Half Shekel, Year 24, ΔK, letter Aleph
between legs, 6.93 g

Tyre, Half Shekel, Year 32, 95/94 BC

4.18 Tyre, Half Shekel, Year 32, 95/94 BC

Table 4-5. Half Shekel for Year 32 (BΛ)

	Mono-gram	Letter Between Legs of Eagle	Weight (grams)	Source
No. 468)		Aleph	7.17	BMC

4.19 Tyre, Half Shekel, Year 33, 94/93 BC



No. 469) Half Shekel, Year 33, ΓΛ, letter Aleph between legs, 7.04 g

4.20 Tyre, Half Shekel, Year 35, 92/91BC



No. 470) Half Shekel, Year 35, ΕΛ, letter Aleph between legs, 6.98 g

4.21 Tyre, Half Shekel, Year 36, 91/90 BC



No. 471) Half Shekel, Year 36, ζΛ, letter Aleph between legs, 6.93 g



No. 472) Half Shekel, Year 36, ζΛ, letter Bet between legs, 7.13 g

Tyre, Half Shekel, Year 37, 90/89 BC

4.22 Tyre, Half Shekel, Year 37, 90/89 BC



No. 473) Half Shekel, Year 37, ZΛ, letter Aleph between legs, 8.24 g



No. 474) Half Shekel, Year 37, ZΛ, letter Aleph between legs, 9.93 g



No. 475) Half Shekel, Year 37, ZΛ, letter Bet between legs, unreported weight

4.23 Tyre, Half Shekel, Year 38, 89/88 BC

Table 4-6. Half Shekel for Year 38 (ΛH)

	Mono-gram	Letter Between Legs of Eagle	Weight (grams)	Source
No. 476)	?	?	?	David Hendin fixed price list, May 29, 2007

4.24 Tyre, Half Shekel, Year 39, 88/87 BC



No. 477) Half Shekel, Year 39, ΘΛ, letter Bet between legs, 6.98 g

Tyre, Half Shekel, Year 39, 88/87 BC

4.25 Tyre, Half Shekel, Year 40, 87/86 BC



No. 478) Half Shekel, Year 40, LM, letter Bet between legs, 7.09 g



No. 479) Half Shekel, Year 40, LM, letter Bet between legs, 7.07 g



No. 480) Half Shekel, Year 40, LM, letter Aleph between legs, 6.74 g

Tyre, Half Shekel, Year 41, 86/85 BC

4.26 Tyre, Half Shekel, Year 41, 86/85 BC

The next two half shekels have the same date and monogram but different Phoenician letters, Aleph and Bet.



**No. 481) Half Shekel, Year 41, AM, letter Aleph
between legs, 7.01 g**



**No. 482) Half Shekel, Year 41, AM, letter Bet
between legs, unreported weight**

4.27 Tyre, Half Shekel, Year 43, 84/83 BC



No. 483) Half Shekel, Year 43, ΓΜ, letter Aleph between legs, 6.78 g

4.28 Tyre, Half Shekel, Year 44, 83/82 BC



No. 484) Half Shekel, Year 44, ΔΜ, letter Aleph between legs, unreported weight

Tyre, Half Shekel, Year 45, 82/81 BC

4.29 Tyre, Half Shekel, Year 45, 82/81 BC



**No. 485) Half Shekel, Year 45, EM, letter Aleph
between legs, 6.88 g**

4.30 Tyre, Half Shekel, Year 46 81/80 BC



**No. 486) Half Shekel, Year 46, ζM, letter Aleph
between legs, unreported weight**

4.31 Tyre, Half Shekel, Year 47, 80/79 BC

Next two half shekels have same date and monogram but different Phoenician letters, Aleph and Bet.



No. 487) Half Shekel, Year 47, ZM, letter Aleph
between legs, 7.06 g



No. 488) Half Shekel, Year 47, ZM, letter Bet
between legs, unreported weight

Tyre, Half Shekel, Year 48, 79/78 BC



No. 489) Half Shekel, Year 47, ZM, letter Bet
between legs, 7.05 g

4.32 Tyre, Half Shekel, Year 48, 79/78 BC



No. 490) Half Shekel, Year 48, HM, no letter
between legs 6.5 g



No. 491) Half Shekel, Year 48, HM, letter Bet
between legs, 7.12 g

4.33 Tyre, Half Shekel, Year 49, 78/77 BC



No. 492) Half Shekel, Year 49, ΘM, letter Bet between legs, 6.75 g

4.34 Tyre, Half Shekel, Year 50, 77/76 BC



No. 493) Half Shekel, Year 50, LN, letter Bet between legs, 6.95 g



No. 494) Half Shekel, Year 50, LN (backward L), letter Aleph between legs, 7.15 g

Tyre, Half Shekel, Year 51, 76/75 BC

4.35 Tyre, Half Shekel, Year 51, 76/75 BC



No. 495) Half Shekel, Year 51, AN, letter Bet
between legs, 6.94 g



No. 496) Half Shekel, Year 51, AN, letter Bet
between legs, 6.93 g



No. 497) Half Shekel, Year 51, AN, letter Bet
between legs, 7.14 g

4.36 Tyre, Half Shekel, Year 53, 74/73 BC



**No. 498) Half Shekel, Year 53, ΓΝ, letter Bet
between legs, 6.5 g**

Tyre, Half Shekel, Year 53, 74/73 BC

4.37 Tyre, Half Shekel, Year 85, 42/41 BC

As noted in the Introduction, no half shekels are reported for years 54 through 84. In error, DCA listed a citation to a half shekel of year 70. I had misread the date, which was actually year 170.

There is a reported half shekel dated year 85, EII, listed as RPC1.4681. The monogram, letter between the eagle legs, and the weight were not reported.

Table 4-7. Half Shekel for Year 85 (EII)

	Mono-gram	Letter Between Legs of Eagle	Weight (grams)	Source
No. 499)	?	?	?	RPC1.4681

4.38 Tyre, Half Shekel, Year 87, 40/39 BC



No. 500) Half Shekel, Year 87, ΠΖ letter Bet between legs, 7.00 g

Table 4-8. Half Shekel for Year 87 (ΠΖ)

	Mono-gram	Letter Between Legs of Eagle	Weight (grams)	Source
No. 501)	Σ Α	Bet	6.52	BMC

4.39 Tyre, Half Shekel, Year 89, 38/37 BC



No. 502) Half Shekel, Year 89, ΠΘ, unclear letter between legs, 6.41 g

4.40 Tyre, Half Shekel, Year 95, 32/31 BC

There is a reported half shekel dated year 95 (ϣΕ) listed as RPC1s.4681C. The monogram, letter between the eagle legs, and the weight were not reported.

Table 4-9. Half Shekel for Year 95 (ϣΕ)

	Mono-gram	Letter Between Legs of Eagle	Weight (grams)	Source
No. 503)	?	?	?	RPC1s. 4681C.

4.41 Tyre, Half Shekel, Year 96, 31/30 BC

There is a reported half shekel dated year 96, ϣϚ, listed as RPC1s.4681D. The monogram, letter between the eagle legs, and the weight were not reported.

Table 4-10. Half Shekel for Year 96 (ϣϚ)

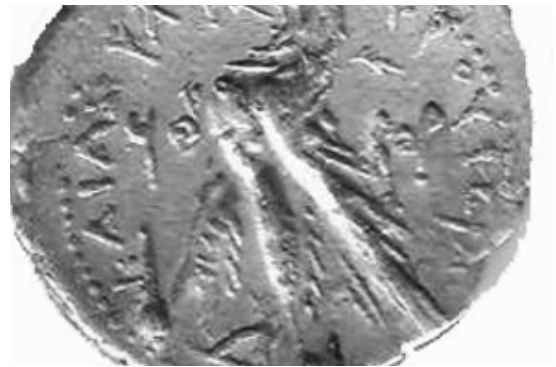
	Mono-gram	Letter Between Legs of Eagle	Weight (grams)	Source
No. 504)	?	?	?	RPC1s. 4681D

4.42 Tyre, Half Shekel, Year 98, 29/28 BC



No. 505) Half Shekel, Year 98, א_H , letter Aleph between legs, 6.95 g

4.43 Tyre, Half Shekel, Year 99, 28/27 BC



No. 506) Half Shekel, Year 99, א_O , unclear letter between legs, 6.7 g



No. 507) Half Shekel, Year 99, א_O , letter Bet between legs, 6.71 g

Tyre, Half Shekel, Year 100, 27/26 BC

4.44 Tyre, Half Shekel, Year 100, 27/26 BC



No. 508) Half Shekel, Year 100, P, letter Bet
between legs, unreported weight



No. 509) Half Shekel, Year 100, P, letter Bet
between legs, unreported weight

4.45 Tyre, Half Shekel, Year 101, 26/25 BC

There is a reported half shekel dated year 101, PA, listed as RPC1s.4683A. The monogram, letter between the eagle legs, and the weight were not reported.

Table 4-11. Half Shekel for Year 101 (PA)

	Mono-gram	Letter Between Legs of Eagle	Weight (grams)	Source
No. 510)	?	?	?	RPC1s. 4683A

4.46 Tyre, Half Shekel, Year 102, 25/24 BC

There is a reported half shekel dated year 102, PB, listed as RPC1s.4683B. The monogram, letter between the eagle legs, and the weight were not reported.

Table 4-12. Half Shekel for Year 102 (PB)

	Mono-gram	Letter Between Legs of Eagle	Weight (grams)	Source
No. 511)	?	?	?	RPC1s. 4683B

4.47 Tyre, Half Shekel, Year 103, 24/23 BC

There is a reported half shekel dated year 103, PΓ, listed as RPC1s.4683C. The monogram, letter between the eagle legs, and the weight were not reported.

Table 4-13. Half Shekel for Year 103 (PΓ)

	Mono-gram	Letter Between Legs of Eagle	Weight (grams)	Source
No. 512)	?	?	?	RPC1s. 4683C

4.48 Tyre, Half Shekel, Year 106, 21/20 BC

No. 513) Half Shekel, Year 106, P ζ , unclear letter between legs, unreported weight

Tyre, Half Shekel, Year 107, 20/19 BC

4.49 Tyre, Half Shekel, Year 107, 20/19 BC



No. 514) Half Shekel, Year 107, PZ, letter Aleph between legs, 6.93 g

4.50 Tyre, Half Shekel, Year 108, 19/18 BC

Table 4-14. Half Shekel for Year 108 (PH)

	Mono-gram	Letter Between Legs of Eagle	Weight (grams)	Source
No. 515)	KY	Bet	6.71	BMC

4.51 Tyre, Half Shekel, Year 109, 18/17 BC



No. 516) Shekel, Year 109, PΘ, letter Bet between legs, 7.02 g

5. Tyre Half Shekels (KP Monogram), DCA 922

5.1 Tyre, Half Shekel, Year 113, 14/13 BC



No. 517) Half Shekel, Year 113, P|Γ, letter Bet between legs, unreported weight

5.2 Tyre, Half Shekel, Year 114, 13/12 BC



No. 518) Half Shekel, Year 114, P|Δ, letter Aleph between legs, 7.01 g

Tyre, Half Shekel, Year 115, 12/11 BC

5.3 Tyre, Half Shekel, Year 115, 12/11 BC

There is a reported half shekel dated year 115, **PIE**, listed as RPC1.4687. The monogram, letter between the eagle legs, and the weight were not reported.

Table 5-1. Half Shekel for Year 115 (PIE)

	Mono-gram	Letter Between Legs of Eagle	Weight (grams)	Source
No. 519)	?	?	?	RPC1.4687

5.4 Tyre, Half Shekel, Year 117, 10/9 BC

There is a reported half shekel dated year 117, **PIZ**, listed as RPC1.4687. The monogram, letter between the eagle legs, and the weight were not reported.

Table 5-2. Half Shekel for Year 117 (PIZ)

	Mono-gram	Letter Between Legs of Eagle	Weight (grams)	Source
No. 520)	?	?	?	RPC1.4687.

5.5 Tyre, Half Shekel, Year 123, 4/3 BC

The monograms on these two half shekels of year 123 appear to be the same.



No. 521) Half Shekel, Year 123, PKΓ, letter Aleph between legs, 6.93 g



No. 522) Half Shekel, Year 123, PKΓ, letter Aleph between legs, 6.95 g

Tyre, Half Shekel, Year 126, 1 BC / 1 AD

5.6 Tyre, Half Shekel, Year 126, 1 BC / 1 AD



No. 523) Half Shekel, Year 126, PK ζ , letter Bet between legs, unreported weight

5.7 Tyre, Half Shekel, Year 131, 5/6 AD



No. 524) Half Shekel, Year 131, PAA, letter Bet between legs, 6.87 g

5.8 Tyre, Half Shekel, Year 132, 6/7 AD



No. 525) Half Shekel, Year 132, PAB, letter Aleph between legs, 7.15 g

5.9 Tyre, Half Shekel, Year 133, 7/8 AD

There is a reported half shekel dated year 133, PΛΓ, listed as RPC1s.4687C. The monogram, letter between the eagle legs, and the weight were not reported.

Table 5-3. Half Shekel for Year 133 (PΛΓ)

	Mono-gram	Letter Between Legs of Eagle	Weight (grams)	Source
No. 526)	?	?	?	RPC1s. 4687C

5.10 Tyre, Half Shekel, Year 134, 8/9 AD

There is a reported half shekel dated year 134, PΛΔ, listed as RPC1s.4687D. The monogram, letter between the eagle legs, and the weight were not reported.

Table 5-4. Half Shekel for Year 134 (PΛΔ)

	Mono-gram	Letter Between Legs of Eagle	Weight (grams)	Source
No. 527)	?	?	?	RPC1s. 4687D

Tyre, Half Shekel, Year 137, 11/12 AD

5.11 Tyre, Half Shekel, Year 137, 11/12 AD



No. 528) Half Shekel, Year 137, PΛZ, letter Bet between legs, 6.43 g

5.12 Tyre, Half Shekel, Year 138, 12/13 AD



No. 529) Half Shekel, Year 138, PΛH, unclear letter between legs, weight unknown

5.13 Tyre, Half Shekel, Year 140, 14/15 AD



No. 530) Half Shekel, Year 140, PM, letter Bet between legs, 6.97 g



No. 531) Half Shekel, Year 140, PM, unclear letter between legs, 6.26 g

5.14 Tyre, Half Shekel, Year 141, 15/16 AD



No. 532) Half Shekel, Year 141, PMA, letter Bet between legs, 6.76 g

Tyre, Half Shekel, Year 142, 16/17 AD

5.15 Tyre, Half Shekel, Year 142, 16/17 AD



No. 533) Half Shekel, Year 142, PMB, letter Aleph between legs, 6.60 g



No. 534) Half Shekel, Year 142, PMB, letter Bet between legs, 6.70 g

5.16 Tyre, Half Shekel, Year 143, 17/18 AD



**No. 535) Half Shekel, Year 143, PMΓ, letter Bet
between legs, 7.03 g**

Tyre, Half Shekel, Year 144, 18/19 AD

5.17 Tyre, Half Shekel, Year 144, 18/19 AD



No. 536) Half Shekel, Year 144, PMΔ, unclear letter between legs, 6.18 g

5.18 Tyre, Half Shekel, Year 145, 19/20 AD

There is a reported half shekel dated year 145, PME, listed as RPC1.4690. The monogram, letter between the eagle legs, and the weight were not reported.

Table 5-5. Half Shekel for Year 145 (PME)

	Mono-gram	Letter Between Legs of Eagle	Weight (grams)	Source
No. 537)	?	?	?	RPC1. 4690

5.19 Tyre, Half Shekel, Year 146, 20/21 AD



No. 538) Half Shekel, Year 146, PM ζ , letter Aleph between legs, 6.58 g

5.20 Tyre, Half Shekel, Year 147, 21/22 AD



No. 539) Half Shekel, Year 147, PMZ, unclear letter between legs, 6.58 g

5.21 Tyre, Half Shekel, Year 148, 22/23 AD

There is a reported half shekel dated year 148, PMH, listed as RPC1s.4691A. The monogram, letter between the eagle legs, and the weight were not reported.

Table 5-6. Half Shekel for Year 148 (PMH)

	Mono-gram	Letter Between Legs of Eagle	Weight (grams)	Source
No. 540)	?	?	?	RPC1. 4691A

5.22 Tyre, Half Shekel, Year 149, 23/24 AD



No. 541) Half Shekel, Year 149, PMΘ, unclear letter between legs, 6.43 g

5.23 Tyre, Half Shekel, Year 150, 24/25 AD

There is a reported half shekel dated year 150, PN, listed as RPC1.4692. The monogram, letter between the eagle legs, and the weight were not reported.

Table 5-7. Half Shekel for Year 150 (PN)

	Mono-gram	Letter Between Legs of Eagle	Weight (grams)	Source
No. 542)	?	?	?	RPC1.4692

5.24 Tyre, Half Shekel, Year 151, 24/25 AD

There is a reported half shekel dated year 151, PNA, listed as RPC1s.4692A. The monogram, letter between the eagle legs, and the weight were not reported.

Table 5-8. Half Shekel for Year 151 (PNA)

	Mono-gram	Letter Between Legs of Eagle	Weight (grams)	Source
No. 543)	?	?	?	RPC1.4692A

5.25 Tyre, Half Shekel, Year 154, 28/29 AD



No. 544) Half Shekel, Year 154, PNΔ, unclear letter between legs, unreported weight

5.26 Tyre, Half Shekel, Year 155, 29/30 AD

Table 5-9. Half Shekel for Year 155 (PNE)

	Mono-gram	Letter Between Legs of Eagle	Weight (grams)	Source
No. 545)	⚡	Aleph	6.61	BMC

Tyre, Half Shekel, Year 159, 33/34 AD

5.27 Tyre, Half Shekel, Year 159, 33/34 AD



No. 546) Half Shekel, Year 159, PNE, letter
Aleph between legs, 6.90 g

5.28 Tyre, Half Shekel, Year 160, 34/35 AD



No. 547) Half Shekel, Year 160, PΞ, unclear letter between legs, 6.80 g

5.29 Tyre, Half Shekel, Year 161, 35/36 AD



No. 548) Half Shekel, Year 161, PΞA, letter Aleph between legs, unreported weight

Tyre, Half Shekel, Year 162, 36/37 AD

5.30 Tyre, Half Shekel, Year 162, 36/37 AD



No. 549) Half Shekel, Year 162, PEB, letter Aleph
between legs, unreported weight



No. 550) Half Shekel, Year 162, PEB, letter Aleph
between legs, unreported weight

5.31 Tyre, Half Shekel, Year 163, 37/38 AD



No. 551) Half Shekel, Year 163, PEΓ, letter Bet between legs, 6 g



No. 552) Half Shekel, Year 163, PEΓ, letter Bet between legs, 7.14 g

Tyre, Half Shekel, Year 164, 38/39 AD

5.32 Tyre, Half Shekel, Year 164, 38/39 AD

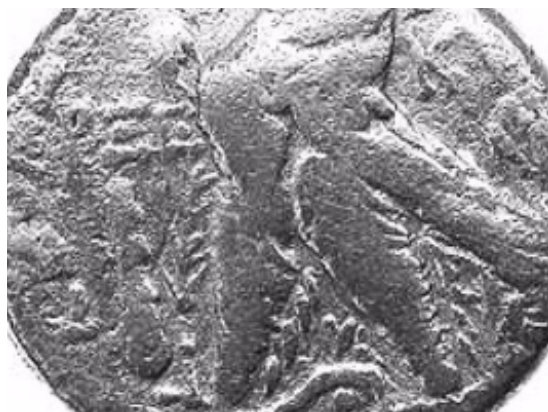


No. 553) Half Shekel, Year 164, PΞΔ, unclear letter between legs, 7.05 g



No. 554) Half Shekel, Year 164, PΞΔ, letter Aleph between legs, 6.8g

5.33 Tyre, Half Shekel, Year 165, 39/40 AD



**No. 555) Half Shekel, Year 165, PΞE, letter Aleph
between legs, 6.35 g**

5.34 Tyre, Half Shekel, Year 166, 40/41 AD



**No. 556) Half Shekel, Year 166, PΞΣ, letter Bet
between legs, 7.04 g**

Tyre, Half Shekel, Year 167, 41/42 AD

5.35 Tyre, Half Shekel, Year 167, 41/42 AD



No. 557) Half Shekel, Year 167, PΞZ, unclear
letter Aleph between legs, 6.94 g

5.36 Tyre, Half Shekel, Year 168, 42/43 AD



No. 558) Half Shekel, Year 168, ΠΕΗ, letter Bet between legs, 6.27 g



No. 559) Half Shekel, Year 168, ΠΕΗ, letter Bet between legs, unreported weight

Tyre, Half Shekel, Year 169, 43/44 AD

5.37 Tyre, Half Shekel, Year 169, 43/44 AD



No. 560) Half Shekel, Year 169, PΞΘ, letter Aleph between legs, 6.32 g



No. 561) Half Shekel, Year 169, PΞΘ, letter Bet between legs, 6.34 g

5.38 Tyre, Half Shekel, Year 170, 44/45 AD



**No. 562) Half Shekel, Year 170, PO, letter Aleph
between legs, 7.14 g**



**No. 563) Half Shekel, Year 170, PO, letter Bet
between legs, 7.22 g**

Tyre, Half Shekel, Year 171, 45/46 AD

5.39 Tyre, Half Shekel, Year 171, 45/46 AD



**No. 564) Half Shekel, Year 171, POA, letter Bet
between legs, 6.98 g**



**No. 565) Half Shekel, Year 171, POA, letter
Aleph between legs, 7.17 g**

5.40 Tyre, Half Shekel, Year 172, 46/47 AD



No. 566) Half Shekel, Year 172, POB, letter Aleph between legs, 7.15 g



No. 567) Half Shekel, Year 172, POB, letter Bet between legs, 7.32 g

Tyre, Half Shekel, Year 173, 47/48 AD

5.41 Tyre, Half Shekel, Year 173, 47/48 AD



No. 568) Half Shekel, Year 173, POF, unclear letter between legs, 7.11 g

5.42 Tyre, Half Shekel, Year 175, 49/50 AD

Table 5-10. Half Shekel for Year 175 (POE)

	Mono-gram	Letter Between Legs of Eagle	Weight (grams)	Source
No. 569)	EP	Aleph	13.37	BMC

5.43 Tyre, Half Shekel, Year 176, 50/51 AD

There is a reported half shekel dated year 176, POC, listed as RPC1s.4703A. The monogram, letter between the eagle legs, and the weight were not reported.

Table 5-11. Half Shekel for Year 176 (POC)

	Mono-gram	Letter Between Legs of Eagle	Weight (grams)	Source
No. 570)	?	?	?	RPC1s. 4703A.

5.44 Tyre, Half Shekel, Year 178, 52/53AD



No. 571) Half Shekel, Year 178, POH, letter Aleph between legs, 6.63 g

The BMC listing below is similar to Coin No. 571 except for different Phoenician letters, Aleph and Bet, between the legs of the eagle.

Table 5-12. Half Shekel for Year 178 (POH)

	Mono-gram	Letter Between Legs of Eagle	Weight (grams)	Source
No. 572)	EP	Bet	6.72	BMC

5.45 Tyre, Half Shekel, Year 181, 55/56 AD



No. 573) Half Shekel, Year 181, PΠA, letter Bet between legs, 5.94 g

Tyre, Half Shekel, Year 182, 56/57 AD

5.46 Tyre, Half Shekel, Year 182, 56/57 AD



No. 574) Half Shekel, Year 182, ΠΠΒ, letter Bet between legs, 6.56 g

5.47 Tyre, Half Shekel, Year 183, 57/58 AD



No. 575) Half Shekel, Year 183 (ΠΠΓ), unclear letter between legs, 6.8 g

5.48 Tyre, Half Shekel, Year 184, 58/59 AD



No. 576) Half Shekel, Year 184, PΠΔ, letter Bet between legs, 6.66 g

There is also a published half shekel of year 184, PΠΔ. However, neither the monogram nor most of the other data are known to me.

Table 5-13. Half Shekel for Year 184 (PΠΔ)

	Mono-gram	Letter Between Legs of Eagle	Weight (grams)	Source
No. 577)	?	?	7.09	Superior 7, 1986 #1423

5.49 Tyre, Half Shekel, Year 190, 64/65 AD



No. 578) Half Shekel, Year 190, PΠ, unclear letter between legs, 6.48 g

Tyre, Half Shekel, Year 191, 65/66 AD

5.50 Tyre, Half Shekel, Year 191, 65/66 AD

This and the previous coin were formerly in the collection of Isadore Goldstein, Zuzim Numismatics.



No. 579) Half Shekel, Year 191, Pϣ A, unclear letter between legs, 6.40 g

5.51 Tyre, Half Shekel, Year Not Readable

There are many half shekels where the date is crudely engraved and not readable.



No. 580) Half Shekel, year?, letter Aleph
between legs, 7.16 g



No. 581) Half Shekel, year?, unclear letter
between legs, 6.66 g

Tyre, Half Shekel, Year Not Readable



6. Tyre Quarter Shekels, DCA 923

6.1 Tyre Quarter Shekel, Year 2, 125/124 BC

This quarter shekel of year 2 (B) appeared in two auctions: Superior, May 31, 1988 lot 1559 and in Freeman and Sear, March 10, 1991, lot 226.



No. 582) Quarter Shekel, Year 2 (B), no letter between legs, 3.42 g

6.2 Tyre Quarter Shekel, Year 5, 122/121 BC

Table 6-1. Quarter Shekel for Year 5 (LE)

	Mono-gram	Letter Between Legs of Eagle	Weight (grams)	Source
No. 583)	?	?	?	Iossif Panos

6.3 Tyre Quarter Shekel, Year 6, 121/120 BC



No. 584) Quarter Shekel, Year 6 (?), L[(?)], letter Bet between legs, 3.42 g

6.4 Tyre Quarter Shekel, Year 9, 118/117 BC



No. 585) Quarter Shekel, Year 9, LΘ, letter Bet between legs, 3.48 g

6.5 Tyre Quarter Shekel, Year 16, 111/110 BC

Table 6-2. Quarter Shekel for Year 16 (ϸ)

	Mono-gram	Letter Between Legs of Eagle	Weight (grams)	Source
No. 586)	?	?	?	Iossif Panos

7. Tyre Eighth Shekels, DCA 924

7.1 Tyre Eighth Shekel, Year 9, 118/117 BC



No. 587) Eighth Shekel, Year 9, LΘ, letter Bet left of palm, monogram right of palm 1.61 g

7.2 Tyre Eighth Shekel, Year 10, 117/116 BC



No. 588) Eighth Shekel, Year 10, L|, letter Bet left of palm, monogram right of palm, 1.75 g



8. Tyre Eighth Shekels, DCA 925

8.1 Tyre Eighth Shekel, Year 9, 118/117 BC



No. 589) Eighth Shekel, Year 9, L Θ , monogram
and letter Bet to right, 1.7 g



9. APPENDIX - References

1. Donald T. Ariel, *A Survey of the Coin Finds in Jerusalem (until the end of Byzantine Period)*, Liber Annuus, Volume 32, 1982, pages 273-326, available at following Web address
http://www.academia.edu/4491083/Ariel_D.T._A_Survey_of_the_Coin_Finds_in_Jerusalem_until_the_end_of_Byzantine_Period_.Liber_Annuus_32_1982_273-326
2. Andrew Burnett, Michael Amandry, Pre Pau Ripollès, **Roman Provincial Coinage, Volume I, From the Death of Caesar to the Death of Vitellius (44 B.C. - 69 A.D.), Part I: Introduction and Catalogue**, British Museum Press and Bibliotheque Nationale, 1992 (Cited as reference RPC.1)
3. Andrew Burnett, Michael Amandry, Pre Pau Ripollès, **Roman Provincial Coinage, Supplement I**, British Museum Press and Bibliotheque Nationale, 1998 (Cited as reference RPC.1s)
4. Edward E Cohen, **Dated Coins of Antiquity**, Classical Numismatic Group, 2011
5. Yoav Farhi, Uri Davidovich, Yuval Gadot, Oded Lipschits, *The Ramat Rabel Hoard of Tyrian Shekels*, Israel Numismatic Journal 17, 2009-2010
http://archaeology.huji.ac.il/depart/classical/farhi/Farhi_et_al.Ramat_Rahel_Hoard.INJ_17.pdf
6. David Hendin, **Guide To Biblical Coins**, Fifth Edition, Amphora Press, Fourth Edition, 2010
7. George F. Hill, **Catalogue of Greek Coins, Phoenicia**, BMC-26, 1910, [Cited as BMC-26 (British Museum Catalogue, Volume 26)]
8. George F. Hill, **Quarterly of the Department of Antiquities of Palestine (QDAP)** Volume 6, 1937 (*Ophel hoard*)
9. Brooks Levy, *Tyrian Shekels: The Myth of the Jerusalem Mint*, **Journal of the Society for Ancient Numismatics**, Volume XIX, No. 2, 1995, Pages 33 to 35
10. Brooks Levy, *Later Tyrian shekels: dating the "crude" issues; reading the controls*, http://va.www.mcu.es/museos/docs/MC/ActasNumis/Later_Tyrian.pdf
11. Brooks Levy, personal notes of Dr. Brooks Levy, Princeton University (cited as Levy)
12. Cecilia Meir, *Tyrian Sheqels and Half Sheqels With Unpublished Dates from the Isfiya Hoard in the Kadman Numismatic Pavilion*, Israel Numismatic Research, 3/2008
13. Cecilia Meir, *Tyrian Sheqels from the 'Isfiya Hoard, Part Two, Kadman Numismatic Pavilion*, Israel Numismatic Research, 5/2010
14. Ya'akov Meshorer, **Ancient Jewish Coinage, Volume II: Herod the Great through Bar Kochbar**, Amphora Books, 1982
15. Numismatic Guarantee Corporation (NGC), David Vagi, <http://www.ngccoin.com/>
16. Rouvier, "Numismatique des Villes de Phénicie," Journal International d'Archeologie Numismatique Volumes 3-7, 1900 to 1904 (Volume 6 in 1903 for Tyre)
17. M. Sharabani, Revue Biblique 1980 (*Qumran hoard*)

APPENDIX - References

18. E.L. Sukenik, Kedem 1942 (Bir Zeit hoard)
19. D. Syon, Gamla, *Tyre and Gamla: A Study in the Monetary Influence of Southern Phoenicia on Galilee and the Golan in the Hellenistic and Roman Periods*, Ph.D. dissertation, Hebrew University of Jerusalem, 2004
[http://www.academia.edu/357408/
Tyre_and_Gamla_A_Study_In_the_Monetary_Influence_of_Southern_Phoenicia_on_Galilee_and_the_Golan_In_the_Hellenistic_and_Roman_Periods](http://www.academia.edu/357408/Tyre_and_Gamla_A_Study_In_the_Monetary_Influence_of_Southern_Phoenicia_on_Galilee_and_the_Golan_In_the_Hellenistic_and_Roman_Periods)

10. APPENDIX - Auction Companies, Coin Dealers and Academic Organizations

The catalogue cites the following companies and people in reference to coins listed in their paper catalogues or Internet websites. Each is usually designated by three or four initials.

1. ACA, AncientCoinArt, www.vcoins.com
2. ADN, Ancient Delights, Numismatics, www.vcoins.com
3. ANE, Ancient Numismatic Enterprise, www.vcoins.com
4. AST, Astarte S.A., Asta Ceresio Monete E Medaglie; Lugano Switzerland, <http://www.astartesa.com/index.php>
5. ATH, Athena, Salem Alshdaifat, www.vcoins.com
6. AUC, Auctiones S.A. or Auctiones AG, Basel
7. ATA, A. Tkalec AG, www.coinstkalec.ch
8. BAL, Baldwin's Auctions Ltd., <http://www.baldwin.co.uk/>
9. BCN, Beast Coins, Numismatics, www.vcoins.com
10. BPN, Dr. Busso Peus Nachfolger, www.bussopeus.de
11. CAC, Cerberus Ancient Coins, www.vcoins.com
12. CAL, Christies Auctions, London
13. CAY, Cayon Auctions, Madrid, Spain
14. CGB, www.CGB.fr, France
15. CNG, Classical Numismatic Group, www.cngcoins.com
16. CNGE, Classical Numismatic Group, electronic auction, www.cngcoins.com
17. DHA, David Hendin (Amphora), fixed price lists, www.amphoracoins.com, www.vcoins.com
18. DMC, Dmitry Markov Coins & Medals, www.vcoins.com
19. DMD, Dr. Martina Dieterle, www.vcoins.com
20. DNW, Dix Noonan Webb, www.dnw.co.uk/
21. DVN, David Vagi, Numismatist, www.davidvagi.com
22. EDK, Empire, Dennis Kroh
23. EJW, Edward J Waddell, www.coin.com
24. ELO, Edgar L Owen, www.vcoins.com
25. EUK, Eukratides Numismatics, www.vcoins.com
26. FAI, Failla Numismatics, www.vcoins.com
27. FLK, Frank L. Kovacs; San Mateo, California, www.frankkovacs.com
28. FAC, Forum Ancient Coins, www.vcoins.com, Joseph Sermarini
29. FAS, Freeman and Sear, www.freemanandsear.com
30. FRK, Fritz Rudolf Künker Münzenhandlung, www.kuenker.de/
31. FSA, Frank Sternberg AG
32. GLC, Gemini, LLC, www.geminauction.com
33. GAM, Gorny, Gorny and Mosch, www.gmcoinart.de/
34. GCA, Guy Clark Ancient Coins, www.vcoins.com
35. GHA, Gerhard Hirsch Auction, www.coinhirsch.de/
36. GOL, Goldberg Auction, www.goldbergcoins.com
37. GWW, Glenn W. Woods, Numismatist, www.vcoins.com
38. HDA, Hess-Divo AG, www.hessdivo.com/
39. HDR, H.D. Rauch GmbH, www.hdrauch.com
40. Helios, Helios Numismatik, <http://www.helios-numismatik.de/>
41. HGA, Heritage Galleries Auctions, www.ha.com
42. HJB, Harlan Berk www.hjberk.com

APPENDIX - Auction Companies, Coin Dealers and Academic Organizations

43. HCL, Henry Clay Lindgren
44. HLN, Hubert Lanz, Numismatik Lanz München, www.lanz.com
45. HSA, Holyland, Salem Alshdaifat, www.vcoins.com
46. HZN, Hussam Zurqieh, Numismatist, www.vcoins.com
47. IVL, Italo Vechhi Ltd
48. JES, Jean Elsen & Ses Fila SA, www.elsen.be
49. JJN, John Jencek, Numismatist, www.jheauctions.com
50. JKN, Jonathan K Kern, www.jkerncoins.com
51. KDN, Kirk Davis, Numismatist, www.vcoins.com
52. KMB, Klassische Münzen, Dr. Michael Brandt, www.vcoins.com
53. LAS, Lavender and Sayles, www.vcoins.com
54. LEU, Leu Numismatiks AG, www.lhs-numismatik.com/
55. LGA, Larry Goldberg Auctioneers, www.goldbergcoins.com
56. Levy, Dr. Brooks Levy, Princeton University, manuscript notes
57. LHS, LHS Numismatiks AG, www.lhs-numismatik.com
58. LAV, Lodge Antiquities, www.vcoins.com
59. M&M, M&M Numismatics Ltd, www.vcoins.com
60. MAL, Alex Malloy
61. MDC, Monnaies de Collection
62. MRV, Mike R. Vosper, www.vcoins.com
63. MMB, Münzen & Medaillen Basel
64. MMD, Münzen & Medaillen Deutschland
65. MRG, Münzhandlung Ritter GmbH, www.vcoins.com
66. NAG, Numismatica Aretusa AG
67. NAC, Numismatica Ars Classica, www.arsclassicacoins.com/
68. NGSA, Numismatica Genevensis SA, www.ngccoin.com/
69. NFA, Numismatic Fine Arts
70. NNP, Noble Numismatics PTY Ltd., www.noble.com.au
71. OAJ, Ofek A. Coins, Jerusalem, www.vcoins.com
72. PBB, Pegasi Buy or Bid, www.pegasionline.com
73. PCV, Pars Coins, www.vcoins.com
74. PHV, Palmyra Heritage, www.vcoins.com
75. PFJ, Paul-Framcis Jacquier
76. PHO, Author's photo collection, source not identified
77. PSH, Perry Siegel, Herakles Numismatics, www.vcoins.com
78. PSP, Pavlos S. Pavlou, www.vcoins.com
79. RBC, Redemption Biblical Coin Collection, <http://biblicalcoins.weebly.com/>
80. RPA, Ponterio and Associates (Richard Ponterio), www.bowersandmerena.com/
81. RMV, Ritter Münzhandlung, www.vcoins.com
82. SAR, Sahrar Numismatics, www.vcoins.com
83. SBV, Schweizerische Bankverein
84. SBP, Stack's, Bowers and Ponterio
85. SCG, Stack's Coin Galleries, www.stacks.com/
86. SAC, Steve Album Coins, www.stevealbum.com
87. SJA, St. James's Auctions (Knightsbridge Coins)
88. SLR, Steve L. Rubinger (Antiqua), fixed price lists, www.antiquainc.com/
89. SPK, Spink, London, www.spink.com
90. SPA, Spink America, New York
91. SPX, Sphinx Numismatics, www.vcoins.com

APPENDIX - Auction Companies, Coin Dealers and Academic Organizations

- 92. SUP, Superior Auctions
- 93. TIJ, Trioinfo Jerusalem, Abraham Madeisker,
www.vcoins.com
- 94. TVN, Tom Vossen, Numismatist, www.vcoins.com
- 95. UBS, UBS Gold & Numismatica
- 96. WAG, Westfälische Auktionsgesellschaft, Heinz-
Günther Hild, www.wag-auktionen.de
- 97. WAN, Windsor Antiquities, www.vcoins.com
- 98. WDK, Dane Kurth, www.wildwinds.com
- 99. WWN, William Warden, Numismatics
- 100. ZJV, Zuzim Judea, www.vcoins.com

--

Dated Coins of Antiquity

A comprehensive catalogue of the coins and how their numbers came about

Dated Coins of Antiquity (DCA) is a substantially complete catalogue of dated coins struck before the lifetime of Jesus Christ. Where a coin series such as the Biblical shekel of Tyre shown below crosses the millennium divide of 1 BC/1 AD, the catalogue continues to its last dated coin in the AD era. The coins of antiquity used various kinds of numbers and more than 50 calendar systems for dating that have no familiarity to most modern readers. The dates and their numerals on the coins serve as historical markers for early advances in recording time. As a practicing mathematician, the author explores how the Greeks, Romans, Phoenicians, Nabataeans and Jews struggled to understand their own numbers as well as those of their competitors or conquerors. Especially the Greeks and Romans across Europe, Asia and Africa experimented with their numbers. Their calendars and notations for numbers varied among cities and even over time in the same city. As expected, they sometimes made mistakes when switching to different kinds of numbers.



Starting with the first dated coin struck by Zankle, Sicily in 494/493 BC, this book lists all coins displaying annual or monthly dates expressed in numbers or words. Nearly 100 issuing states or authorities are represented. The catalogue describes more than 900 type coins struck in gold, silver and bronze, exceeding 6,000 different dated coins, dozens of which are cited in no other catalogue. It corrects the misreading of numerals in dates from earlier references on Ptolemaic Egypt and Alexandrian Sidon using Greek numbers, and early Tyre dated with Phoenician numbers. It also updates the BC dating of coins, such as those from Cappadocia, Cyprus, and Elymais, according to current research. Newly reported dates including photographs for the shekels and half shekels of Tyre are extensive. The catalogue and a brief history of numbers draw on nearly 400 numismatic, history and science books and journals, more than a thousand coin auction catalogues, hundreds of Internet sales sites and my own collection.



Classical Numismatic Group, Inc.

Lancaster, Pennsylvania and London, England

Library of Congress Number 2011932604

ISBN 978-0-9837652-9-5